



Chen Hsong Europe

MINIJET  
JETMASTER  
EASYMASTER  
SUPERMASTER



Minijet-SVP/2



Easymaster-SVP/2



Jetmaster-Ai-SVP/2



Jetmaster-SVP/2



Jetmaster-SVP/2 Large



Supermaster-TP

*Euroseries*



## Chen Hsong Europe

Chen Hsong Europe B.V., located in the Netherlands, is a wholly-owned subsidiary of Chen Hsong Limited.

It is our goal to strengthen the position in Europe. Together with a significantly expanded agency network we will continuously improve customer support and aftersales service.

On the location in the Netherlands, several machines and spare parts are in stock. Machines are also available for demonstration, testing and training.

## 55 Years of Solid Foundation

The Chen Hsong Group was established in 1958 and has grown from a small machinery workshop to one of the largest manufacturers of injection moulding machines in the world.

A full range of machines is produced with clamping forces from 20 tons to 6500 tons (currently the largest machine produced in Asia), and customers in over 80 countries worldwide. Headquartered in Hong Kong, Chen Hsong owns a number of manufacturing facilities in China.

The 560.000m<sup>2</sup> Chen Hsong Industrial Park in Shenzhen, China serves as the Group's flagship manufacturing, research and technology centre.

Other major manufacturing plants are in Shunde, Ningbo and Taiwan.

Chen Hsong's leading position in the industry is secured through relentless pursuit of technological advancements, manufacturing innovation, high service level and a mind for excellence.





Chen Hsong Europe

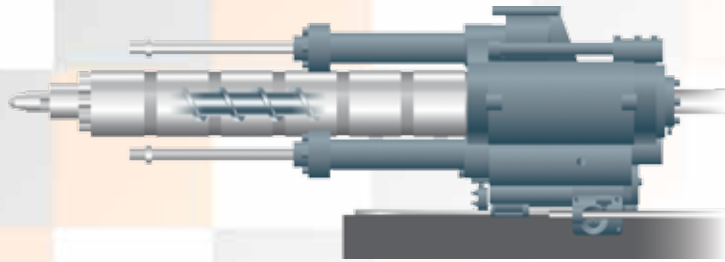


General information	4
Minijet-SVP/2	6
Easymaster-SVP/2	10
Jetmaster-Ai-SVP/2	14
Jetmaster-SVP/2	18
Jetmaster-SVP/2 Large	22
Supermaster-TP Advanced	28

# General information

## An injection unit with higher precision, reliability and speed

- Screws are made only with high-grade steel plus a final nitration (hardening) step
- Dual (balanced) injection cylinders. No lateral forces act on the unit during injection, enabling precise injection control
- Screw tips, valves and check rings made only with high-quality tool-grade steel to ensure durability and injection precision



## Clamping unit with high precision

Optimised five-point toggle design with the fastest clamping speed possible. Clamping unit and ejector are provided with high precision

potentiometers. All these points results in a longer opening stroke and smooth mould adjustment.

The exclusive circular platen provides an even stress distribution to moulds, improves production stability and quality and 10 years guarantee.



## All machines will be delivered with:

- CE declaration
- Euromap standards
- Energy saving Inovance servo drives
- German hydraulic pumps
- Beckhoff or B&R controller
- High resolution potentiometers
- Nitrided injection screw and barrel
- PID barrel and nozzle temperature control
- Ceramic heater bands
- High torque radial piston hydraulic motor for screw drive
- Euromap platen design, bolt holes (combined with T-slot)
- Exclusive circular platen design (Patent), guaranteed for ten years
- Clamping unit designed with finite element analysis
- Adjustable slider supports for moving platen
- High tensile tiebars, induction hardened, with chrome-plated surface
- Automatic mould height adjustment
- Electrical, mechanical and hydraulic safety devices
- Multiple ejector system
- Core pulling devices
- Air blow out devices
- Water flow meters
- (Bypass) oil filtration
- Electrical/pneumatic automatic front door (depending on machine size)
- Standard spare parts and mould clamps
- Other standard and/or customer specific specifications

## B&R Smartmold IMM controller

The Smartmold controller of B&R for injection molding machines is freely expandable with standard B&R I/O modules even in IP67. Automatic sequences and I/O assignments can be freely configurable by end-users directly on HMI. The controller also supports parallel movements to minimize cycle times and to boost productivity.



The Smartmold also features:

- Graphical representation of automatic cycle
- Standard SPC features
- High precision barrel temperature control
- Integrated mold temperature controller (optional)
- Support of various bus interfaces (e.g. CAN, RS485, Profibus)
- Remote control with PC and mobile devices for advanced diagnostics
- Unlimited languages support via UNICODE
- Seamless integration of electrical injection molding machines
- Seamless integration of servo pumps

All in all the Smartmold controller from B&R, with its 10.4" high resolution TFT color display and ultra-fast scan time for high repeatability and quick responses, is a high-end controller.

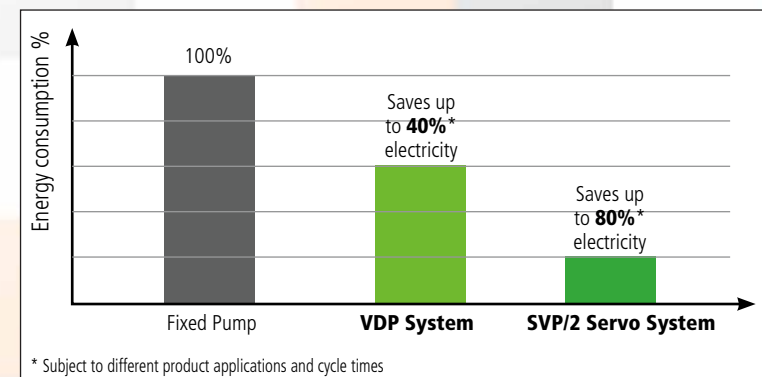
## Intelligent Inovance IS300 series servo drive

The Inovance IS300 series servo drive is designed dedicated for injection molding machines.

Supporting CANBUS communication and configured with PID algorithm, the IS300 servo drive performs perfectly on energy conservation, high precision, low noise and easy maintenance.



For systems using IS300, energy can be saved by up to 80%, comparing with the traditional constant and variable displacement pump systems.



# MINIJET

*SVP/2 Servo drive series*



# MINIJET

## *SVP/2 Servo drive series*

### **Revolutionary intelligent servo system**

The Minijet Servo Drive Injection Moulding Machine is driven by the intelligent servo system from Inovance. The Minijet-SVP/2 machine combines the highest efficiency, high precision, energy saving, low inertia, highest response and lower noise when operation, especially suitable to refined and high precision product applications.

### **Energy Saving**

The SVP/2 system, the synchronous rotary speed controlled servomotor with control unit inside, drives a fixed internal gear pump. The motor speed times the displacement of the gear pump and determines the output flow. The system pressure is measured real time by a pressure sensor. In this way it can provide the required flow according the requirement to eliminate non-functioning consumption!

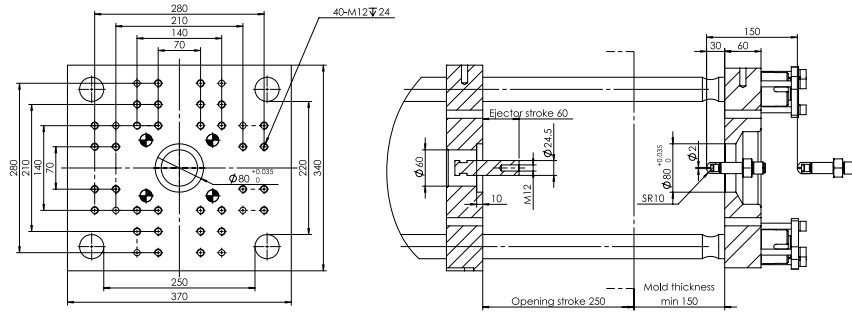
### **Ultimate Response, Precision & Repeatability, low Noise and low Inertia**

Injection unit	Unit	MJ20-H-SVP/2			MJ35-SVP/2			MJ55-SVP/2		
Swept Volume	cm <sup>3</sup>	20	25	30	43	56	70	63	80	98
Injection Weight (PS)	g	18	22	27	39	51	64	58	72	89
Screw Diameter	mm	18	20	22	22	25	28	25	28	31
Screw L/D Ratio	L/D	21	19	17,5	23	20	18	22	20	18
Injection Pressure (Max.)	kgf/cm <sup>2</sup>	2.139	1.732	1.426	2.302	1.732	1.426	2.068	1.650	1.345
Plasticizing Capacity (PS)	g/s	2	3	4,2	3,2	4,6	6,5	6	8,4	11,3
Screw Rotation Speed (Max.)	rpm	290			230			240		
Screw Stroke	mm	80			115			130		
Clamping unit										
Clamping Force (Max.)	t	20			35			55		
Opening Stroke	mm	250			230			250		
Maximum Daylight	mm	400			530			570		
Mould platen (HxV)	mm	370 x 340			450 x 430			450 x 450		
Space between Tie Bars (HxV)	mm	250 x 220			280 x 260			310 x 310		
Max. Mould Thickness	mm	400			300			320		
Min. Mould Thickness	mm	150			80			80		
Ejector Stroke	mm	60			60			75		
Ejector Force	t	1,7			2,7			2,8		
Others										
System Pressure	kgf/cm <sup>2</sup>	175			175			175		
Pump Motor	kW	9,5			9,5			11		
Electrical Heating	kW	3			4,2			5,2		
Temperature Control Zones	Zones	3			3+1			3+1		
Oil Tank Capacity	L	80			90			130		
Machine Dimensions (LxWxH)	m	2,5 x 0,9 x 1,5			3,0 x 1,0 x 1,75			3,4 x 1,1 x 1,8		
Machine Weight	t	1,2			1,6			2		

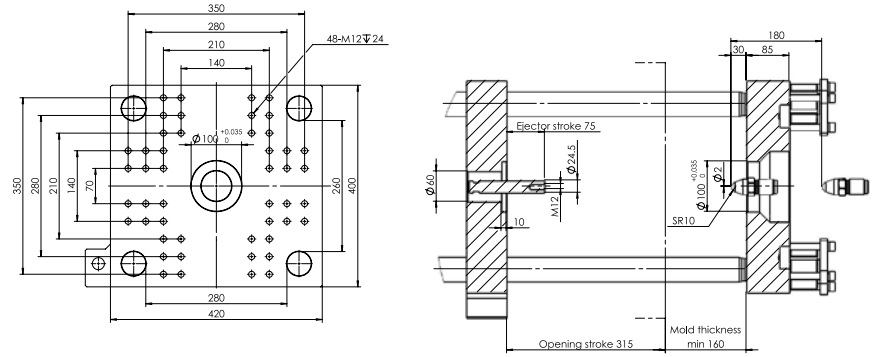


# MINIJET - SVP/2 Servo drive series

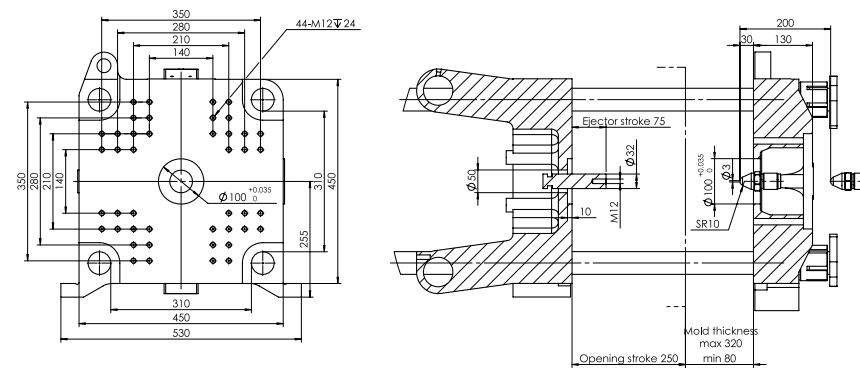
## MJ20-H-SVP/2



## MJ35-SVP/2



## MJ55-SVP/2



# EASYMASTER

*SVP/2 Servo drive series*



# EASYMASTER

## *SVP/2 Servo drive series*

### **Revolutionary intelligent servo system**

Driven by a revolutionary intelligent servo system, the Easymaster-SVP/2 injection moulding machine series combines a fast-response gear pump with a high-precision servo drive, integrated with a proprietary servo controller that guarantees the highest response, highest precision and lowest power consumption at the same time.

### **Energy Saving**

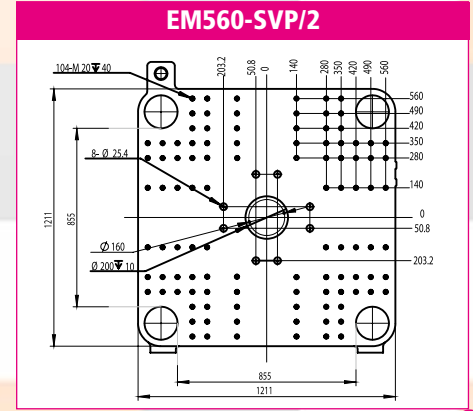
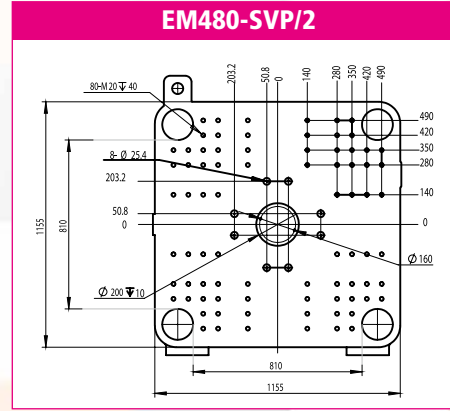
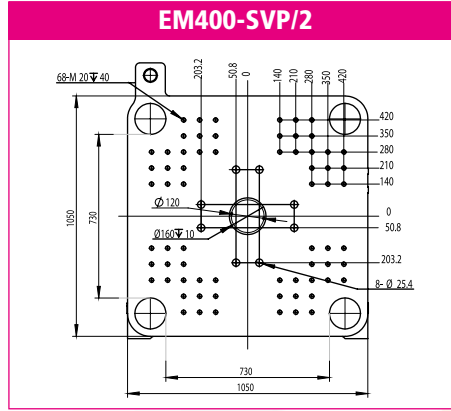
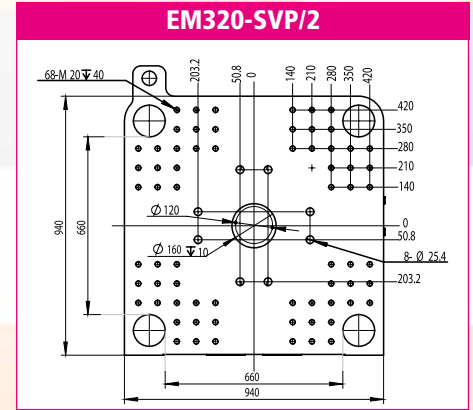
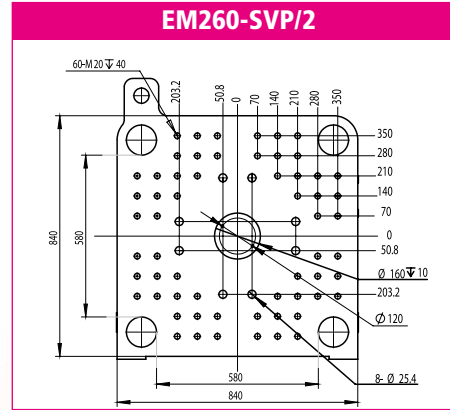
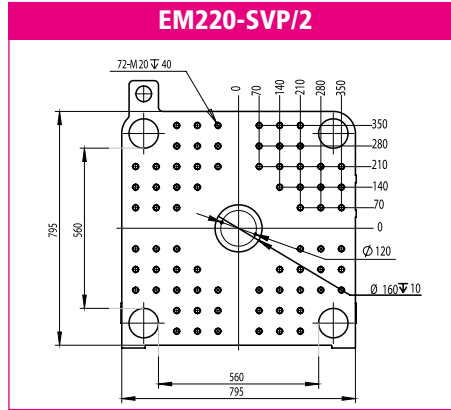
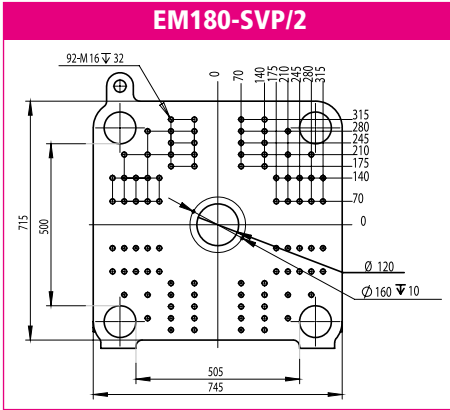
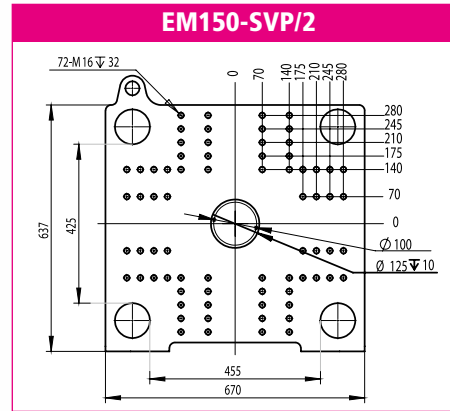
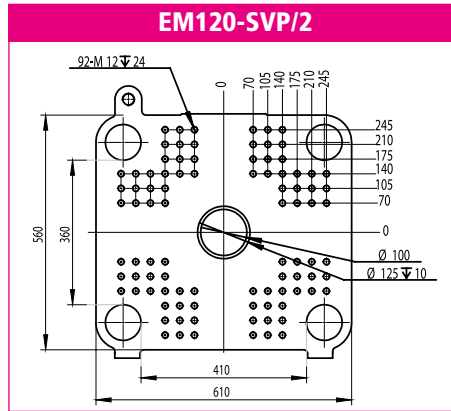
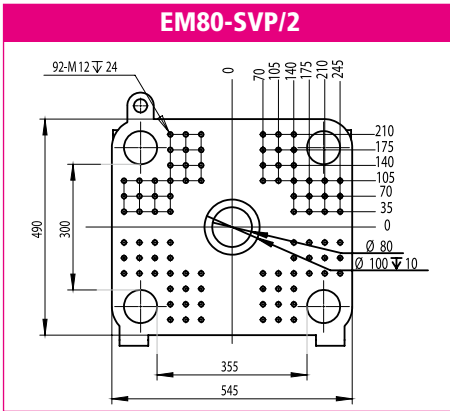
Saves up to 80% of electricity compared to traditional fixed pump systems.

### **Ultimate Response, Precision & Repeatability, low noise and long operational life**

The response speed is more than double of a variable displacement pump. Up to 0.5% repeatability, even under extremely low speed & prolonged holding conditions. Low oil temperature conserves cooling water and reduces the need for hydraulic oil, thus extends the useable life of hydraulic parts.

Injection unit	Unit	EM80-SVP/2			EM120-SVP/2			EM150-SVP/2			EM-180SVP/2			EM220-SVP/2			EM260-SVP/2			EM320-SVP/2			EM400-SVP/2			EM480-SVP/2			EM560-SVP/2					
		121	163	221	163	221	265	277	332	425	382	488	650	390	499	664	584	777	969	904	1.128	1.413	1.216	1.524	1.866	1.767	2.164	2.544	1.767	2.164	2.544			
Swept Volume	cm <sup>3</sup>	121	163	221	163	221	265	277	332	425	382	488	650	390	499	664	584	777	969	904	1.128	1.413	1.216	1.524	1.866	1.767	2.164	2.544	1.767	2.164	2.544			
Injection Weight (PS)	g	113	150	203	150	203	244	255	305	391	351	449	598	359	459	611	537	715	892	832	1.038	1.300	1.119	1.402	1.717	1.625	1.990	2.340	1.625	1.990	2.340			
Screw Diameter	mm	31	36	42	36	42	46	42	46	52	46	52	60	46	52	60	52	60	67	60	67	75	67	75	83	75	83	90	75	83	90			
Screw L/D Ratio	L/D	23	20	17	23	20	18	22	20	18	23	20	17	23	20	17	24	21	19	24	21	19	24	21	19	23	21	19	23	21	19			
Injection Pressure (Max.)	kgf/cm <sup>2</sup>	2.140	1.590	1.162	1.926	1.416	1.172	1.977	1.651	1.294	2.160	1.692	1.284	2.384	1.865	1.396	2.343	1.752	1.416	2.262	1.824	1.457	2.241	1.803	1.467	2.170	1.762	1.508	2.170	1.762	1.508			
Injection Rate (PS)	g/s	64	86	117	107	146	175	131	157	200	170	218	290	155	198	263	193	257	320	235	293	367	295	370	453	379	464	546	379	464	546			
Plasticizing Capacity (PS)	g/s	6,6	10,8	15,1	11,7	16,4	22,2	13,8	18,6	25,5	19,9	27,3	36,4	19,9	27,3	36,4	27,1	36,9	50,6	32,8	44,9	59,5	49,1	64,9	79,5	67,5	82,7	107	67,5	82,7	107			
Screw Rotation Speed (Max.)	rpm	185			200			170			180			180			170			150			165			160			160					
Screw Stroke	mm	160			160			200			230			235			275			320			345			400			400					
<b>Clamping unit</b>																																		
Clamping Force (Max.)	t	80			120			150			180			220			260			320			400			480			560					
Opening Stroke	mm	320			340			410			460			490			535			600			670			770			835					
Max imum Daylight	mm	640			720			860			960			1.090			1.130			1.260			1.420			1.590			1.685					
Mould platen (HxW)	mm	490 x 545			560 x 510			614 x 670			715 x 745			795 x 795			840 x 840			940 x 937			1.050 x 1.050			1.155 x 1.155			1.211 x 1.211					
Space between Tie Bars (HxW)	mm	355 x 300			410 x 360			455 x 425			505 x 500			560 x 560			580 x 580			660 x 660			730 x 730			810 x 810			855 x 855					
Max. Mould Thickness	mm	320			380			450			500			600			600			660			750			820			850					
Min. Mould Thickness	mm	130			145			160			180			195			195			220			250			270			330					
Ejector Stroke	mm	80			100			100			130			130			180			180			215			250			250					
Ejector Force	t	2,7			4,2			4,2			4,9			7,7			7,7			7,7			11,1			11,1			11,1					
<b>Others</b>																																		
System Pressure	kgf/cm <sup>2</sup>	175			175			175			175			175			175			175			175			175			175			175		
Pump Motor	kW	11			16			16			30			30			36			48			68			72			72					
Electrical heating	kW	6,5			9			9,5			10			14			18,3			19,9			21,8			30			30					
Temperature Control Zones	Zones	4			4			4			5			5			6			6			6			6			6					
Oil Tank Capacity	L	170			170			275			275			360			430			525			600			800			800					
Machine Dimensions (LxWxH)	m	4,6 x 1,1 x 1,7			4,7 x 1,1 x 1,7			5,1 x 1,2 x 1,9			5,5 x 1,3 x 1,9			6,1 x 1,5 x 2,1			6,4 x 1,5 x 2,2			6,9 x 1,6 x 2,3			7,9 x 1,7 x 2,3			8,8 x 1,9 x 2,3			9 x 2,0 x 2,3					
Machine Weight	t	2,8			3,5			4,5			6			7			8			10,6			14			18			20					

# EASYMASTER - SVPI/2 Servo drive series



# JETMASTER-Ai

*SVPI2 Servo drive series*



# JETMASTER-Ai

## *SVP/2 Servo drive series*

### **Revolutionary intelligent servo system**

Driven by the revolutionary intelligent servo system, the Jetmaster-Ai-SVP/2 injection moulding machine series combines a fast-response gear pump with a high-precision servo drive that guarantees the highest response, highest precision and lowest power consumption at the same time.

### **Energy Saving**

Saves up to 80% of electricity compared to traditional fixed pump systems.

### **Ultimate Response, Precision & Repeatability, low noise and long operational life**

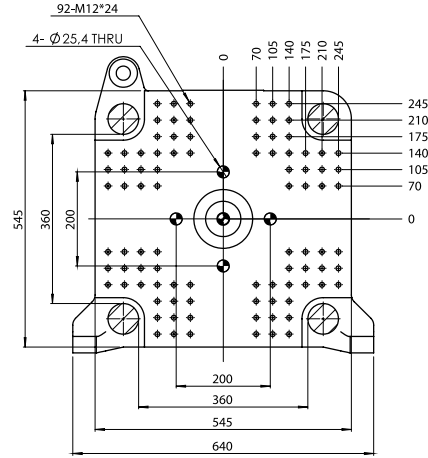
The response speed is more than double of a variable displacement pump. Up to 0,5% repeatability, even under extremely low speed & prolonged holding conditions. Low oil temperature conserves cooling water and reduces the need for hydraulic oil, thus extends the useable life of hydraulic parts.

Injection unit	Unit	JM98-Ai-SVP/2			JM138-Ai-SVP/2			JM178-Ai-SVP/2			JM228-Ai-SVP/2		
Swept Volume	cm <sup>3</sup>	106	158	231	158	231	332	231	341	478	341	499	735
Injection Weight (PS)	g	96	144	210	144	210	303	210	310	435	310	454	669
Screw Diameter	mm	31	36	41	36	41	46	41	46	52	46	52	60
Screw L/D Ratio	L/D	20	20	20	20	20	20	20	20	20	20	20	20
Injection Pressure (Max.)	kgf/cm <sup>2</sup>	2.549	1.890	1.457	2.755	2.124	1.687	2.368	1.881	1.472	2.543	1.990	1.495
Injection Rate (PS)	g/s	78	106	137	91	118	148	136	171	218	157	202	268
Plasticizing Capacity (PS)	g/s	12	16	24	15	21	26	18	23	33	21	31	48
Screw Rotation Speed (Max.)	rpm	266			250			213			200		
Screw Stroke	mm	140	155	175	155	175	200	175	205	225	205	235	260
<b>Clamping unit</b>													
Clamping Force (Max.)	t	98			138			178			228		
Opening Stroke	mm	320			360			440			490		
Maximum Daylight	mm	700			810			960			1.040		
Mould platen (HxV)	mm	545 x 545			620 x 620			700 x 700			785 x 785		
Space between Tie Bars (HxV)	mm	360 x 360			410 x 410			460 x 460			520 x 520		
Max. Mould Thickness	mm	380			450			520			550		
Min. Mould Thickness	mm	125			150			175			200		
Ejector Stroke	mm	100			120			140			150		
Ejector Force	t	3,4			3,4			5,5			5,5		
<b>Others</b>													
System Pressure	kgf/cm <sup>2</sup>	175			175			175			175		
Pump Motor	kW	16			19,6			24			34,7		
Electrical Heating	kW	6,8	7,2	8,7	8,5	9,7	11,4	10,8	13,6	14,8	13,6	14,3	17
Temperature Control Zones	Zones	3+1			3+1			3+1			3+1		
Oil Tank Capacity	L	180			258			360			465		
Machine Dimensions (LxWxH)	m	4,13 x 1,41 x 1,91			4,73 x 1,48 x 2,06			5,27 x 1,70 x 2,12			5,75 x 1,70 x 2,18		
Machine Weight	t	3,2			4,5			5,7			7,3		

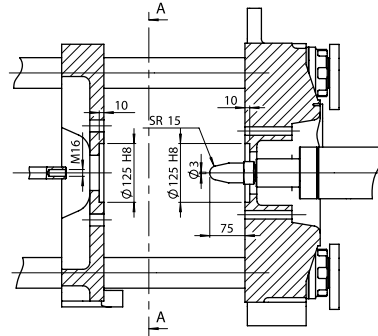


# JETMASTER-Ai - SVP/2 Servo drive series

## JM98-Ai-SVP/2



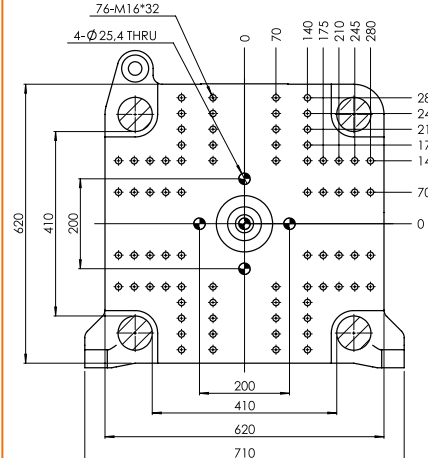
A-A



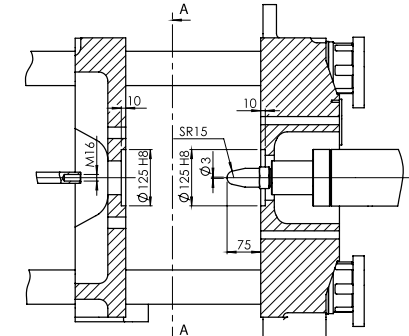
Moveable platen

Fixed platen

## JM138-Ai-SVP/2



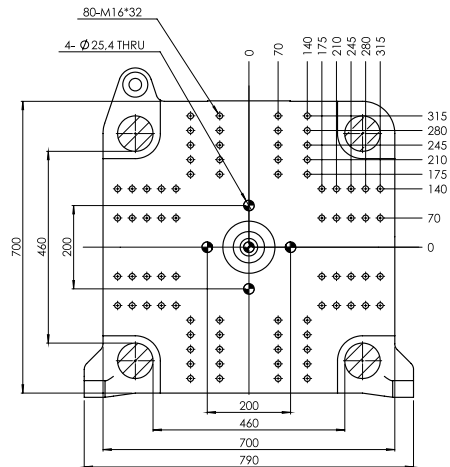
A-A



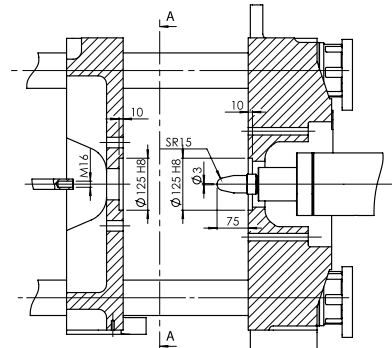
Moveable platen

Fixed platen

## JM178-Ai-SVP/2



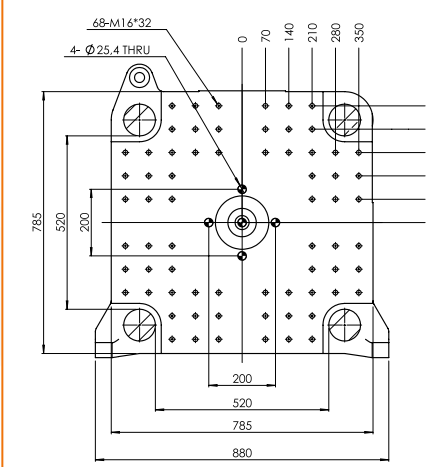
A-A



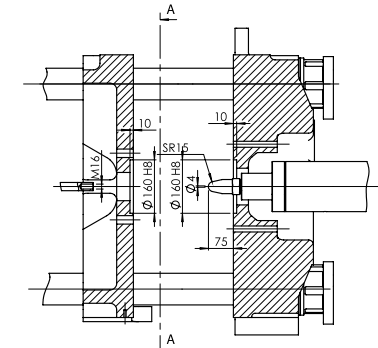
Moveable platen

Fixed platen

## JM228-Ai-SVP/2



A-A



Moveable platen

Fixed platen

# JETMASTER

*SVP12 Servo drive series*



# JETMASTER

## *SVP/2 Servo drive series*

### **Revolutionary intelligent servo system**

Driven by the revolutionary intelligent servo system, the Jetmaster-SVP/2 injection moulding machine series combines a fast-response gear pump with a high-precision servo drive that guarantees the highest response, highest precision and lowest power consumption at the same time.

### **Energy Saving**

Saves up to 80% of electricity compared to traditional fixed pump systems.

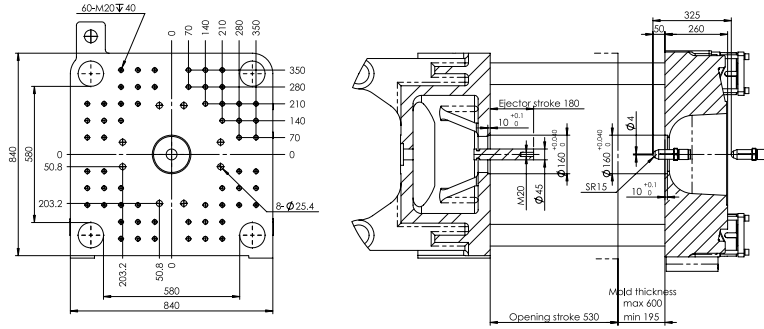
### **Ultimate Response, Precision & Repeatability, low noise and long operational life**

The response speed is more than double of a variable displacement pump. Up to 0,5% repeatability, even under extremely low speed & prolonged holding conditions. Low oil temperature conserves cooling water and reduces the need for hydraulic oil, thus extends the useable life of hydraulic parts.

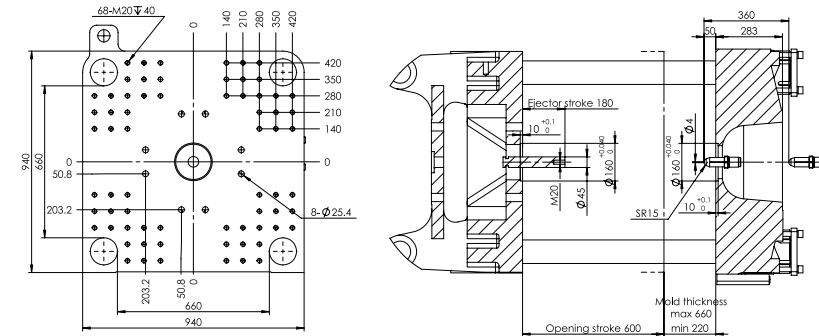
Injection unit	Unit	JM268-SVP/2			JM328-SVP/2			JM408-SVP/2			JM488-SVP/2			JM568-SVP/2		
Swept Volume	cm <sup>3</sup>	584	778	970	905	1.128	1.414	1.216	1.524	1.867	1.767	2.164	2.545	1.767	2.164	2.545
Injection Weight (PS)	g	537	715	891	832	1.037	1.300	1.118	1.402	1.717	1.625	1.990	2.340	1.625	1.990	2.340
Screw Diameter	mm	52	60	67	60	67	75	67	75	83	75	83	90	75	83	90
Screw L/D Ratio	L/D	24,2	21	18,8	23,5	21	18,8	23,5	21	19	23,2	21	19,4	23,2	21	19,4
Injection Pressure (Max.)	kgf/cm <sup>2</sup>	2.294	1.723	1.382	2.224	1.785	1.428	2.203	1.765	1.438	2.123	1.734	1.479	2.123	1.734	1.479
Injection Rate (PS)	g/s	164	218	271	218	272	341	268	336	412	340	416	490	340	416	490
Plasticizing Capacity (PS)	g/s	31,7	43,2	59,1	39,6	54,2	71,7	49,3	68,6	84	71,7	92,4	119,6	71,7	92,4	119,6
Screw Rotation Speed (Max.)	rpm	180			165			150			165			165		
Screw Stroke	mm	275			320			345			400			400		
<b>Clamping unit</b>																
Clamping Force (Max.)	t	260			320			400			480			560		
Opening Stroke	mm	530			600			670			770			835		
Maximum Daylight	mm	1.130			1.260			1.420			1.590			1.685		
Mould platen (HxV)	mm	840 x 840			937 x 940			1.050 x 1.050			1.155 x 1.155			1.211 x 1.211		
Space between Tie Bars (HxV)	mm	580 x 580			660 x 660			730 x 730			810 x 810			855 x 855		
Max. Mould Thickness	mm	600			660			750			820			850		
Min. Mould Thickness	mm	195			220			250			275			330		
Ejector Stroke	mm	180			180			215			250			250		
Ejector Force	t	7,7			7,7			11,1			11,1			11,1		
<b>Others</b>																
System Pressure	kgf/cm <sup>2</sup>	175			175			175			175			175		
Pump Motor	kW	36			48			68			68			72		
Electrical Heating	kW	18,3			20			21,6			30			30		
Temperature Control Zones	Zones	5+Nozzle			5+Nozzle			5+Nozzle			5+Nozzle			5+Nozzle		
Oil Tank Capacity	L	430			525			680			800			900		
Machine Dimensions (LxWxH)	m	6,2 x 1,8 x 2,2			6,8 x 1,8 x 2,3			7,6 x 2,0 x 2,3			8,4 x 2,1 x 2,5			8,6 x 2,1 x 2,5		
Machine Weight	t	9			11			16			18			20		

# JETMASTER - SVP/2 Servo drive series

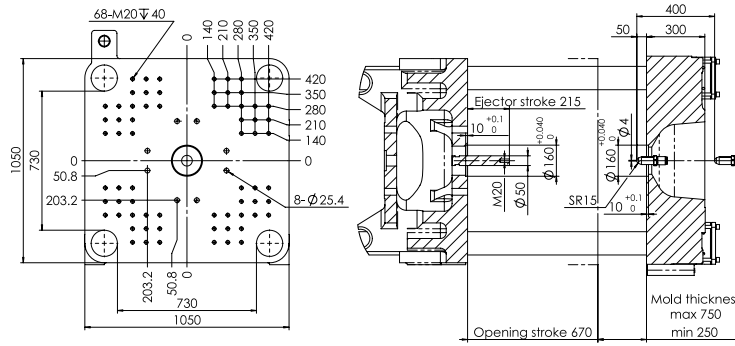
## JM268-SVP/2



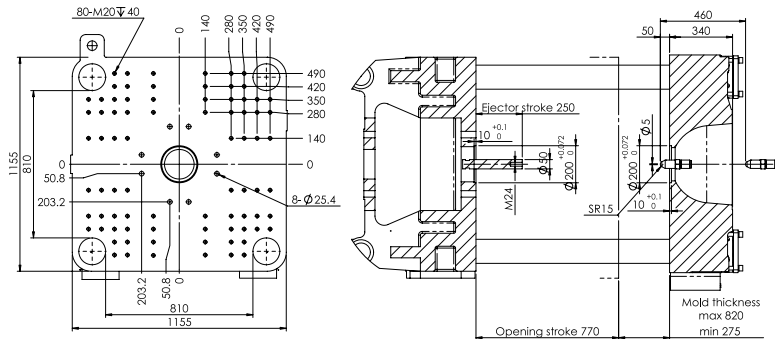
## JM328-SVP/2



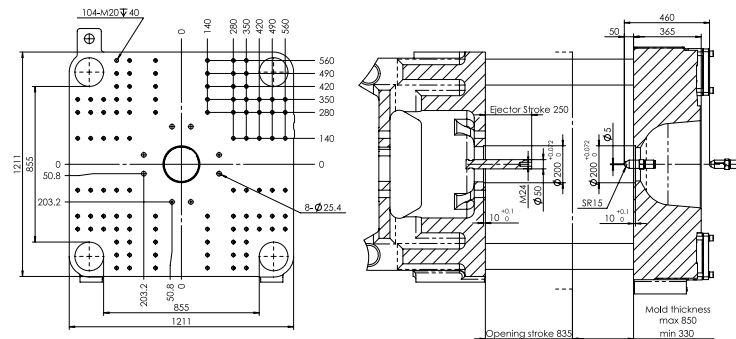
## JM408-SVP/2



## JM488-SVP/2



## JM568-SVP/2



# JETMASTER

*SVPI2 Large Servo drive series*



# JETMASTER

## *SVP/2 Large Servo drive series*

### **Revolutionary intelligent servo system**

Driven by a revolutionary intelligent servo system, the Jetmaster-SVP/2 Large power pack combines a fast-response gear pump with a high-precision servomotor, integrated with a proprietary servo-drive that guarantees the highest response, highest precision and lowest power consumption at the same time.

### **Energy Saving**

Saves up to 80% of electricity compared to traditional fixed pump systems.

### **Ultimate Response, Precision & Repeatability, low noise and long operational life**

The response speed is more than double of a variable displacement pump. Up to 0,5% repeatability, even under extremely low speed & prolonged holding conditions. Low oil temperature conserves cooling water and reduces the need for hydraulic oil, thus extends the useable life of hydraulic parts.

### **Multi-pump Combination Hydraulic Power System**

The patented Multi-pump Combination Hydraulic Power system provide closed-loop control with single-pump pressure and rapid pressure relief. Highest energy efficiency is achieved while maintaining fast response, low-impact pressure and high control accuracy.



Injection unit	Unit	JM650-SVP/2			JM800-SVP/2			JM1000-SVP/2			JM1200-SVP/2			JM1400-SVP/2		
Swept Volume	cm <sup>3</sup>	2.300	2.704	3.206	2.926	3.469	4.371	3.922	4.941	5.881	5.701	6.785	7.963	7.351	8.627	10.005
Injection Weight (PS)	g	2.116	2.488	2.950	2.692	3.191	4.021	3.608	4.546	5.411	5.244	6.242	7.325	6.983	7.936	9.204
Screw Diameter	mm	83	90	98	90	98	110	98	110	120	110	120	130	120	130	140
Screw L/D Ratio	L/D	23,9	22	20,2	24	22	19,6	24,7	22	20,2	24	22	20	24	22	20
Injection Pressure (Max.)	kgf/cm <sup>2</sup>	2.160	1.840	1.550	2.180	1.840	1.460	2.140	1.690	1.420	1.722	1.446	1.232	1.864	1.589	1.375
Injection Rate (PS)	g/s	421	495	587	566	671	845	710	895	1.065	1.070	1.274	1.495	986	1.157	1.342
Plasticizing Capacity (PS)	g/s	82	98	130	72	90	128	87	120	156	122,2	157,6	184,9	124,7	146,3	156,7
Screw Rotation Speed (Max.)	rpm	152			110			113			113			89		
Screw Stroke	mm	425			460			520			600			650		
<b>Clamping unit</b>																
Clamping Force (Max.)	t	650			800			1.000			1.200			1.400		
Opening Stroke	mm	920			1.025			1.150			1.320			1.500		
Maximum Daylight	mm	1.830			2.100			2.350			2.620			2.950		
Mould platen (HxV)	mm	1.310 x 1.310			1.440 x 1.440			1.570 x 1.570			1.800 x 1.800			1.960 x 1.960		
Space between Tie Bars (HxV)	mm	900 x 900			1.000 x 1.000			1.100 x 1.100			1.250 x 1.250			1.450 x 1.350		
Max. Mould Thickness	mm	910			1.075			1.200			1.300			1.450		
Min. Mould Thickness	mm	350			400			450			500			650		
Ejector Stroke	mm	265			300			350			350			380		
Ejector Force	t	18			29			29			35			35		
<b>Others</b>																
System Pressure	kgf/cm <sup>2</sup>	175			175			175			175			175		
Pump Motor	kW	84			116			136			204			204		
Electrical heating	kW	36			41			51			55			60		
Temperature Control Zones	Zones	5+Nozzle			8			8			8			8		
Oil Tank Capacity	L	900			1.050			1.200			1.600			2.000		
Machine Dimensions (LxWxH)	m	9,6 x 2,1 x 2,9			11 x 2,5 x 3,0			11,7 x 2,5 x 3,1			13,2 x 2,8 x 2,7			14,1 x 3,1 x 3,1		
Machine Weight	t	38			48			53			64			78		

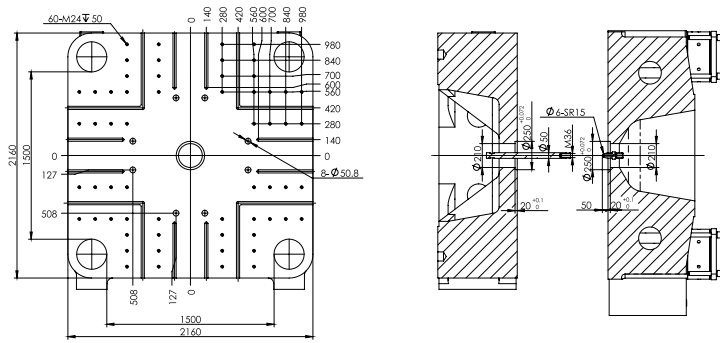




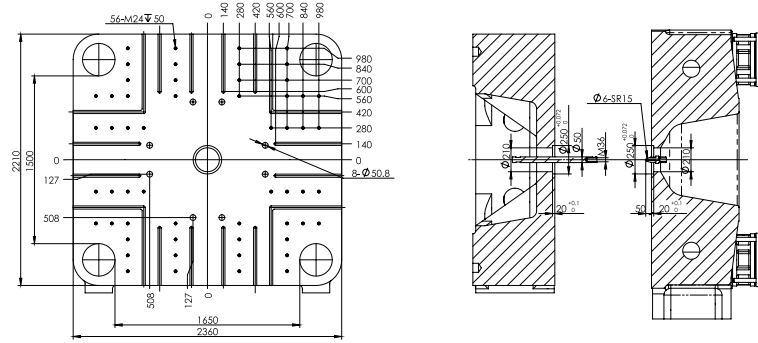
Injection unit	Unit	JM1600-SVP/2			JM1850-SVP/2			JM2200-SVP/2			JM2600-SVP/2		
Swept Volume	cm <sup>3</sup>	9.290	10.776	12.370	9.290	10.776	12.370	11.545	13.253	16.036	14.579	17.640	20.993
Injection Weight (PS)	g	8.547	9.914	11.380	8.547	9.914	11.380	10.621	12.193	14.753	13.413	16.229	19.314
Screw Diameter	mm	130	140	150	130	140	150	140	150	165	150	165	180
Screw L/D Ratio	L/D	24	22	20	24	22	20	24	22	20	24	22	20
Injection Pressure (Max.)	kgf/cm <sup>2</sup>	1.997	1.722	1.497	1.997	1.722	1.497	2.027	1.773	1.457	2.160	1.793	1.497
Injection Rate (PS)	g/s	987	1.145	1.314	1.234	1.431	1.643	1.229	1.411	1.708	1.444	1.747	2.079
Plasticizing Capacity (PS)	g/s	143,1	153,2	183,2	178,5	191,1	228,5	160,1	191,5	240,9	195,6	246,1	315,4
Screw Rotation Speed (Max.)	rpm	86			109			90			92		
Screw Stroke	mm	700			700			750			825		
<b>Clamping unit</b>													
Clamping Force (Max.)	t	1.600			1.850			2.200			2.600		
Opening Stroke	mm	1.600			1.650			1.700			1.900		
Maximum Daylight	mm	3.200			3.300			3.500			3.750		
Mould platen (HxV)	mm	2.160 x 2.160			2.210 x 2.360			2.360 x 2.560			2.590 x 2.740		
Space between Tie Bars (HxV)	mm	1.500 x 1.500			1.650 x 1.500			1.800 x 1.600			1.900 x 1.750		
Max. Mould Thickness	mm	1.600			1.650			1.800			1.850		
Min. Mould Thickness	mm	700			750			900			950		
Ejector Stroke	mm	400			420			420			420		
Ejector Force	t	40			40			46			46		
<b>Others</b>													
System Pressure	kgf/cm <sup>2</sup>	175			175			175			175		
Pump Motor	kW	192			272			272			340		
Electrical heating	kW	93			92,5			110			115		
Temperature Control Zones	Zones	8			8			8			8		
Oil Tank Capacity	L	2.400			2.400			2.600			3.500		
Machine Dimensions (LxWxH)	m	15,2 x 3,3 x 3,2			15,4 x 3,4 x 3,2			16,9 x 3,8 x 3,4			19,4 x 3,9 x 3,8		
Machine Weight	t	111			116			155			182		

# JETMASTER - SVP/2 Large Servo drive series

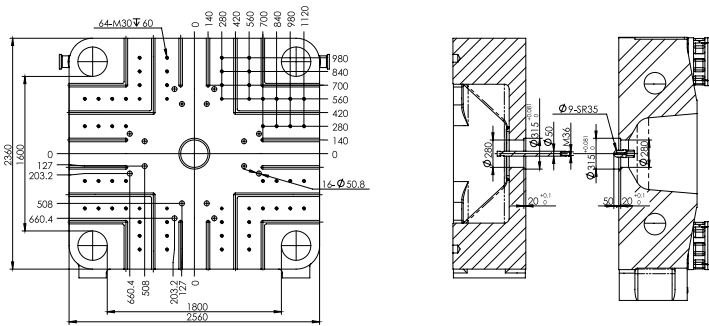
JM1600-SVP/2



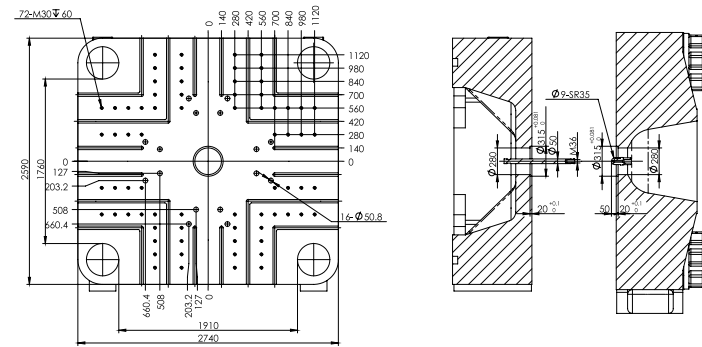
JM1850-SVP/2



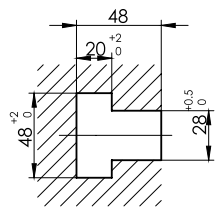
JM2200-SVP/2



JM2600-SVP/2

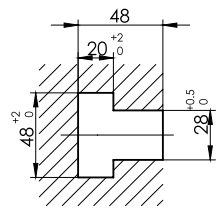


T-slot Section



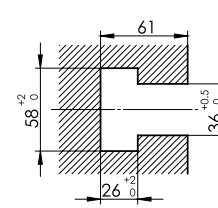
JM1600-SVP/2

T-slot Section



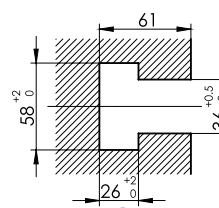
JM1850-SVP/2

T-slot Section



JM2200-SVP/2

T-slot Section



JM2600-SVP/2

# SUPERMASTER

*TP Advanced Servo drive series*



# SUPERMASTER

## *TP Advanced Servo drive series*

### **Revolutionary intelligent servo system**

The Supermaster Two Platen Servo Drive injection moulding machine series is a revolutionary two-platen design. Designed in 3 years with a team led by leading European and Japanese industry experts, it represents an unique combination of world-class, no compromise performance and characteristics. Numerous innovations protected by international patents give this machine a very good price-performance value.



### **The fastest clamping unit available: 750mm/sec.**

Extremely fast clamp movements significantly shorten cycle time.

### **Patented tie-bar/hydraulic connection**

Reduces stress concentration and greatly simplifies maintenance.

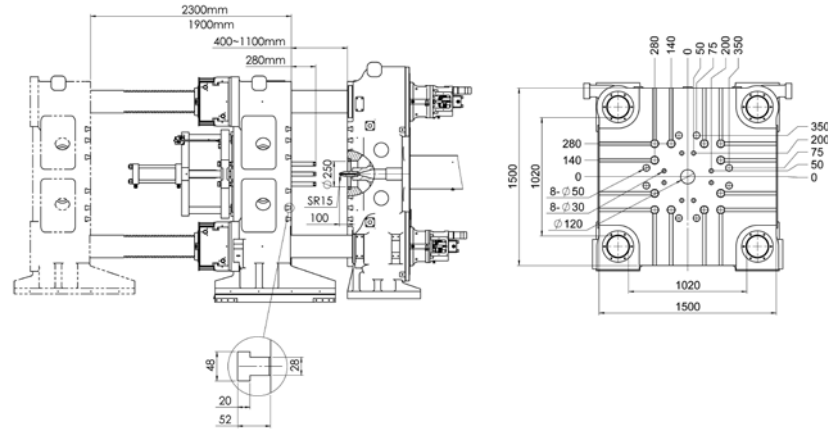
### **Patented high-speed automatic mould-height adjustment and interlock mechanism**

Ensures accurate, reliability and fast operation

### **State-of-the-Art Injection Unit Design**

- Extra feeding temperature control zone
- 3-colinear ball bearings ensure perfect alignment
- Nozzle tip can be moved beyond the fixed platen by up to 300mm

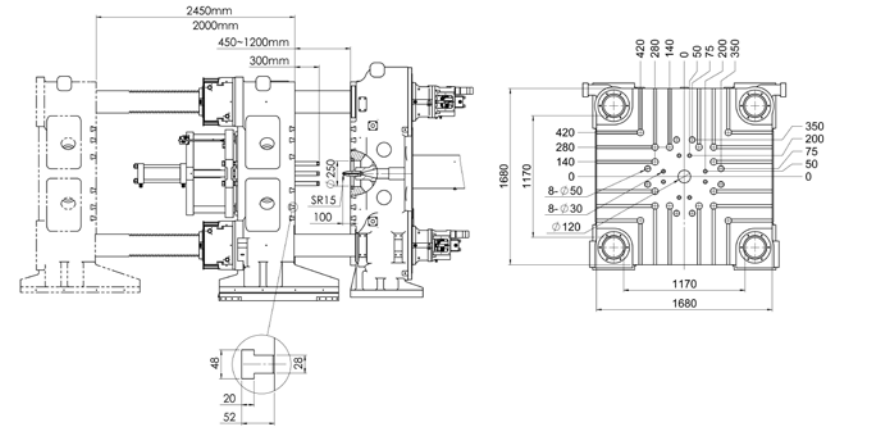
Clamping Unit	Unit	
Clamping Force (Max.)	t	700
Opening Stroke	mm	1.200 - 1.900
Maximum Daylight	mm	2.300
Mould platen (HxV)	mm	1.500 x 1.500
Space between Tie Bars (HxV)	mm	1.020 x 1.020
Max. Mould Thickness	mm	1.100
Min. Mould Thickness	mm	400
Ejector Stroke	mm	280
Ejector Force	t	22



Injection unit	Unit	J1	J2	K1	K2	N1	N2	P1	P2	Q1	Q2	A1	A2	R1	R2	B1	B2	C1	C2	D1	D2	E1	E2	F1	F2	G1	G2	H
Swept volume	cm <sup>3</sup>	2.163	2.543	2.861	3.393	3.770	4.749	5.224	6.217	6.782	7.960	8.623	10.001	10.770	12.364	14.483	19.713	23.079	30.144	34.540	43.715	49.278	60.838	67.216	81.331	89.048	105.975	116.573
Shot weight (PS)	g	1.968	2.314	2.604	3.087	3.430	4.322	4.754	5.658	6.172	7.244	7.847	9.101	9.801	11.251	13.180	17.939	21.002	27.431	31.431	39.780	44.843	55.362	61.166	74.011	81.034	96.437	106.081
Screw diameter	mm	83	90	90	98	98	110	110	120	120	130	130	140	140	150	150	175	175	200	200	225	225	250	250	275	275	300	300
Screw L/D ratio	L/D	22	20,3	22	20,2	22	19,5	22	20,2	22	20,3	22	20,4	22	20,5	22	18,9	22	19,3	22	19,6	22	19,8	22	20	22	20,2	22
Injection pressure (Max.)	kgf/cm <sup>2</sup>	1.905	1.620	1.874	1.579	1.874	1.487	1.874	1.579	1.874	1.599	1.834	1.579	1.834	1.599	1.834	1.345	1.630	1.253	1.630	1.283	1.630	1.324	1.630	1.345	1.630	1.365	1.630
Injection rate (PS)	g/s	509	599	578	685	655	825	805	958	951	1.116	1.106	1.282	1.264	1.452	1.265	1.722	1.629	2.128	2.011	2.545	2.475	3.056	2.839	3.435	3.922	4.668	4.518
Screw rotation speed (Max.)	rpm	150	150	140	140	130	130	115	115	110	110	100	100	95	95	95	80	83	69	65	50	60	50	60	47	50	40	40
Screw stroke	mm	400	400	450	450	500	500	550	550	600	600	650	650	700	700	820	820	960	960	1.100	1.100	1.240	1.240	1.370	1.370	1.500	1.500	1.650
Others																												
System pressure	kgf/cm <sup>2</sup>	175	175	175	175	175	175	175	175	175	175	175	175	175	175	175	175	175	175	175	175	175	175	175	175	175	175	175
Pump motor	kW	75	75	85	85	93	93	104,5	104,5	124,5	124,5	142,5	142,5	159,5	159,5	159,5	159,5	195	195	240	240	285	285	375	375	520	520	600
Heating capacity	kW	38	38	42	42	48	48	50	50	70	70	80	80	95	95	100	100	130	130	175	175	220	220	270	270	330	330	390
Temperature control zones	Zones	7	7	7	7	7	7	7	7	7	7	7	7	7	7	7	7	7	7	7	7	7	7	7	7	7	7	7
Oil tank capacity	L	1.650	1.650	1.700	1.700	1.750	1.750	2.250	2.250	2.350	2.350	2.700	2.700	3.300	3.300	3.850	3.850	4.150	4.150	5.950	5.950	7.400	7.400	8.650	8.650	11.000	11.000	12.500
Machine Dimensions (LxWxH)	m	9,2x2,9x2,5		9,3x2,9x2,5		9,4x2,9x2,5		10,2x2,9x2,5		10,9x2,9x2,5		11,0x2,9x2,5		11,3x2,9x2,5		11,3x2,9x2,5		12,4x2,9x2,5		13,2x2,9x2,5		14,8x2,9x2,5		16,2x2,9x2,5		18,6x2,9x2,5		20,6x2,9x2,5
Machine Weight (Approx.)	t	28		29		31		33		35		37		38		39		46		54		64		77		94		114

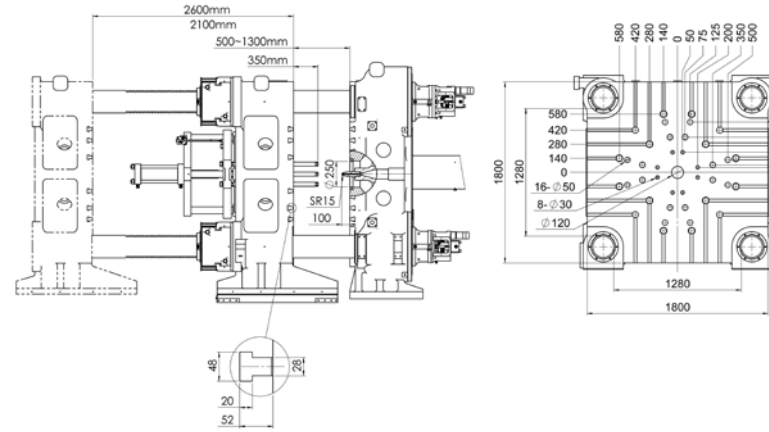
**SUPERMASTER 850 - TP Advanced**

Clamping Unit	Unit	
Clamping Force (Max.)	t	850
Opening Stroke	mm	1.250 - 2.000
Maximum Daylight	mm	2.450
Mould platen (HxV)	mm	1.680 x 1.680
Space between Tie Bars (HxV)	mm	1.170 x 1.170
Max. Mould Thickness	mm	1.200
Min. Mould Thickness	mm	450
Ejector Stroke	mm	300
Ejector Force	t	22



Injection unit	Unit	J1	J2	K1	K2	N1	N2	P1	P2	Q1	Q2	A1	A2	R1	R2	B1	B2	C1	C2	D1	D2	E1	E2	F1	F2	G1	G2	H
Swept volume	cm <sup>3</sup>	2.163	2.543	2.861	3.393	3.770	4.749	5.224	6.217	6.782	7.960	8.623	10.001	10.770	12.364	14.483	19.713	23.079	30.144	34.540	43.715	49.278	60.838	67.216	81.331	89.048	105.975	116.573
Shot weight (PS)	g	1.968	2.314	2.604	3.087	3.430	4.322	4.754	5.658	6.172	7.244	7.847	9.101	9.801	11.251	13.180	17.939	21.002	27.431	31.431	39.780	44.843	55.362	61.166	74.011	81.034	96.437	106.081
Screw diameter	mm	83	90	90	98	98	110	110	120	120	130	130	140	140	150	150	175	175	200	200	225	225	250	250	275	275	300	300
Screw L/D ratio	L/D	22	20,3	22	20,2	22	19,5	22	20,2	22	20,3	22	20,4	22	20,5	22	18,9	22	19,3	22	19,6	22	19,8	22	20	22	20,2	22
Injection pressure (Max.)	kgf/cm <sup>2</sup>	1.905	1.620	1.874	1.579	1.874	1.487	1.874	1.579	1.874	1.599	1.834	1.579	1.834	1.599	1.834	1.345	1.630	1.253	1.630	1.283	1.630	1.324	1.630	1.345	1.630	1.365	1.630
Injection rate (PS)	g/s	509	599	578	685	655	825	805	958	951	1.116	1.106	1.282	1.264	1.452	1.265	1.722	1.629	2.128	2.011	2.545	2.475	3.056	2.839	3.435	3.922	4.668	4.518
Screw rotation speed (Max.)	rpm	150	150	140	140	130	130	115	115	110	110	100	100	95	95	95	80	83	69	65	50	60	50	60	47	50	40	40
Screw stroke	mm	400	400	450	450	500	500	550	550	600	600	650	650	700	700	820	820	960	960	1.100	1.100	1.240	1.240	1.370	1.370	1.500	1.500	1.650
Others																												
System pressure	kgf/cm <sup>2</sup>	175	175	175	175	175	175	175	175	175	175	175	175	175	175	175	175	175	175	175	175	175	175	175	175	175	175	175
Pump motor	kW	75	75	85	85	93	93	104,5	104,5	124,5	124,5	142,5	142,5	159,5	159,5	159,5	159,5	195	195	240	240	285	285	375	375	520	520	600
Heating capacity	kW	38	38	42	42	48	48	50	50	70	70	80	80	95	95	100	100	130	130	175	175	220	220	270	270	330	330	390
Temperature control zones	Zones	7	7	7	7	7	7	7	7	7	7	7	7	7	7	7	7	7	7	7	7	7	7	7	7	7	7	7
Oil tank capacity	L	1.680	1.680	1.730	1.730	1.780	1.780	2.300	2.300	2.400	2.400	2.750	2.750	3.350	3.350	3.900	3.900	4.200	4.200	6.000	6.000	7.450	7.450	8.700	8.700	11.000	11.000	12.500
Machine Dimensions (LxWxH)	m	9,6x3,1x2,7		9,7x3,1x2,7		9,8x3,1x2,7		10,6x3,1x2,7		11,2x3,1x2,7		11,3x3,1x2,7		11,7x3,1x2,7		11,7x3,1x2,7		12,7x3,1x2,7		13,6x3,1x2,7		15,1x3,1x2,7		16,5x3,1x2,7		19,0x3,1x2,7		21,0x3,1x2,7
Machine Weight (Approx.)	t	33		34		36		38		40		42		43		44		51		59		69		82		99		119

Clamping Unit	Unit	
Clamping Force (Max.)	t	1.050
Opening Stroke	mm	1.300 - 2.100
Maximum Daylight	mm	2.600
Mould platen (HxW)	mm	1.800 x 1.800
Space between Tie Bars (HxW)	mm	1.280 x 1.280
Max. Mould Thickness	mm	1.300
Min. Mould Thickness	mm	500
Ejector Stroke	mm	350
Ejector Force	t	22

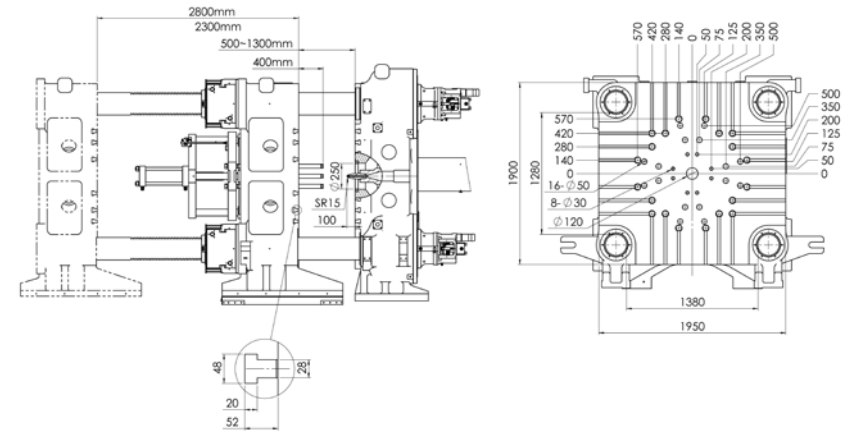


Injection unit	Unit	J1	J2	K1	K2	N1	N2	P1	P2	Q1	Q2	A1	A2	R1	R2	B1	B2	C1	C2	D1	D2	E1	E2	F1	F2	G1	G2	H	
Swept volume	cm <sup>3</sup>	2.163	2.543	2.861	3.393	3.770	4.749	5.224	6.217	6.782	7.960	8.623	10.001	10.770	12.364	14.483	19.713	23.079	30.144	34.540	43.715	49.278	60.838	67.216	81.331	89.048	105.975	116.573	
Shot weight (ρs)	g	1.968	2.314	2.604	3.087	3.430	4.322	4.754	5.658	6.172	7.244	7.847	9.101	9.801	11.251	13.180	17.939	21.002	27.431	31.431	39.780	44.843	55.362	61.166	74.011	81.034	96.437	106.081	
Screw diameter	mm	83	90	90	98	98	110	110	120	120	130	130	140	140	150	150	175	175	200	200	225	225	250	250	275	275	300	300	
Screw L/D ratio	L/D	22	20,3	22	20,2	22	19,5	22	20,2	22	20,3	22	20,4	22	20,5	22	18,9	22	19,3	22	19,6	22	19,8	22	20	22	20,2	22	
Injection pressure (Max.)	kgf/cm <sup>2</sup>	1.905	1.620	1.874	1.579	1.874	1.487	1.874	1.579	1.874	1.599	1.834	1.579	1.834	1.599	1.834	1.345	1.630	1.253	1.630	1.283	1.630	1.324	1.630	1.345	1.630	1.365	1.630	
Injection rate (PS)	g/s	509	599	578	685	655	825	805	958	951	1.116	1.106	1.282	1.264	1.452	1.265	1.722	1.629	2.128	2.011	2.545	2.475	3.056	2.839	3.435	3.922	4.668	4.518	
Screw rotation speed (Max.)	rpm	150	150	140	140	130	130	115	115	110	110	100	100	95	95	95	80	83	69	65	50	60	50	60	47	50	40	40	
Screw stroke	mm	400	400	450	450	500	500	550	550	600	600	650	650	700	700	820	820	960	960	1.100	1.100	1.240	1.240	1.370	1.370	1.500	1.500	1.650	
<b>Others</b>																													
System pressure	kgf/cm <sup>2</sup>	175	175	175	175	175	175	175	175	175	175	175	175	175	175	175	175	175	175	175	175	175	175	175	175	175	175	175	175
Pump motor	kW	75	75	85	85	93	93	104,5	104,5	124,5	124,5	142,5	142,5	159,5	159,5	159,5	159,5	195	195	240	240	285	285	375	375	520	520	600	
Heating capacity	kW	38	38	42	42	48	48	50	50	70	70	80	80	95	95	100	100	130	130	175	175	220	220	270	270	330	330	390	
Temperature control zones	Zones	7	7	7	7	7	7	7	7	7	7	7	7	7	7	7	7	7	7	7	7	7	7	7	7	7	7	7	
Oil tank capacity	L	1.700	1.700	1.750	1.750	1.800	1.800	2.300	2.300	2.400	2.400	2.750	2.750	3.350	3.350	3.900	3.900	4.200	4.200	6.000	6.000	7.450	7.450	8.700	8.700	11.000	11.000	12.500	
Machine Dimensions (LxWxH)	m	9,9x3,3x2,8		10x3,3x2,8		10,1x3,3x2,8		10,8x3,3x2,8		11,5x3,3x2,8		11,6x3,3x2,8		12x3,3x2,8		12x3,3x2,8		13x3,3x2,8		13,9x3,3x2,8		15,4x3,3x2,8		16,8x3,3x2,8		19,3x3,3x2,8		21,3x3,3x2,8	
Machine Weight (Approx.)	t	39		40		42		44		46		48		49		50		57		65		75		88		105		125	



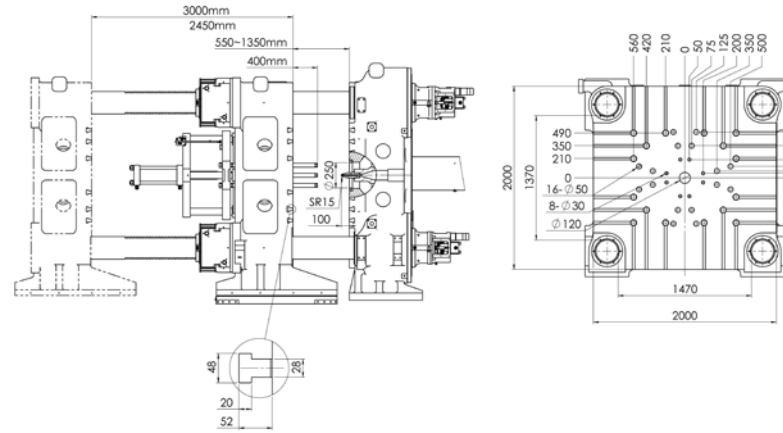
**SUPERMASTER 1250 - TP Advanced**

Clamping Unit	Unit	
Clamping Force (Max.)	t	1.250
Opening Stroke	mm	1.500 - 2.300
Maximum Daylight	mm	2.800
Mould platen (HxV)	mm	1.950 x 1.900
Space between Tie Bars (HxV)	mm	1.380 x 1.280
Max. Mould Thickness	mm	1.300
Min. Mould Thickness	mm	500
Ejector Stroke	mm	400
Ejector Force	t	22



Injection unit	Unit	J1	J2	K1	K2	N1	N2	P1	P2	Q1	Q2	A1	A2	R1	R2	B1	B2	C1	C2	D1	D2	E1	E2	F1	F2	G1	G2	H	
Swept volume	cm <sup>3</sup>	2.163	2.543	2.861	3.393	3.770	4.749	5.224	6.217	6.782	7.960	8.623	10.001	10.770	12.364	14.483	19.713	23.079	30.144	34.540	43.715	49.278	60.838	67.216	81.331	89.048	105.975	116.573	
Shot weight (PS)	g	1.968	2.314	2.604	3.087	3.430	4.322	4.754	5.658	6.172	7.244	7.847	9.101	9.801	11.251	13.180	17.939	21.002	27.431	31.431	39.780	44.843	55.362	61.166	74.011	81.034	96.437	106.081	
Screw diameter	mm	83	90	90	98	98	110	110	120	120	130	130	140	140	150	150	175	175	200	200	225	225	250	250	275	275	300	300	
Screw L/D ratio	L/D	22	20,3	22	20,2	22	19,5	22	20,2	22	20,3	22	20,4	22	20,5	22	18,9	22	19,3	22	19,6	22	19,8	22	20	22	20,2	22	
Injection pressure (Max.)	kgf/cm <sup>2</sup>	1.905	1.620	1.874	1.579	1.874	1.487	1.874	1.579	1.874	1.599	1.834	1.579	1.834	1.599	1.834	1.345	1.630	1.253	1.630	1.283	1.630	1.324	1.630	1.345	1.630	1.365	1.630	
Injection rate (PS)	g/s	509	599	578	685	655	825	805	958	951	1.116	1.106	1.282	1.264	1.452	1.265	1.722	1.629	2.128	2.011	2.545	2.475	3.056	2.839	3.435	3.922	4.668	4.518	
Screw rotation speed (Max.)	rpm	150	150	140	140	130	130	115	115	110	110	100	100	95	95	95	80	83	69	65	50	60	50	60	47	50	40	40	
Screw stroke	mm	400	400	450	450	500	500	550	550	600	600	650	650	700	700	820	820	960	960	1.100	1.100	1.240	1.240	1.370	1.370	1.500	1.500	1.650	
Others																													
System pressure	kgf/cm <sup>2</sup>	175	175	175	175	175	175	175	175	175	175	175	175	175	175	175	175	175	175	175	175	175	175	175	175	175	175	175	
Pump motor	kW	75	75	85	85	93	93	104,5	104,5	124,5	124,5	142,5	142,5	159,5	159,5	159,5	159,5	195	195	240	240	285	285	375	375	520	520	600	
Heating capacity	kW	38	38	42	42	48	48	50	50	70	70	80	80	95	95	100	100	130	130	175	175	220	220	270	270	330	330	390	
Temperature control zones	Zones	7	7	7	7	7	7	7	7	7	7	7	7	7	7	7	7	7	7	7	7	7	7	7	7	7	7	7	
Oil tank capacity	L	1.730	1.730	1.780	1.780	1.830	1.830	2.300	2.300	2.400	2.400	2.750	2.750	3.350	3.350	3.900	3.900	4.200	4.200	6.000	6.000	7.450	7.450	8.700	8.700	11.000	11.000	12.500	
Machine Dimensions (LxWxH)	m	10,2x3,5x3		10,3x3,5x3		10,4x3,5x3		11,2x3,5x3		11,8x3,5x3		11,9x3,5x3		12,3x3,5x3		12,3x3,5x3		13,3x3,5x3		14,2x3,5x3		15,8x3,5x3		17,1x3,5x3		19,6x3,5x3		21,6x3,5x3	
Machine Weight (Approx.)	t	49		50		52		54		56		58		59		60		67		75		85		98		115		135	

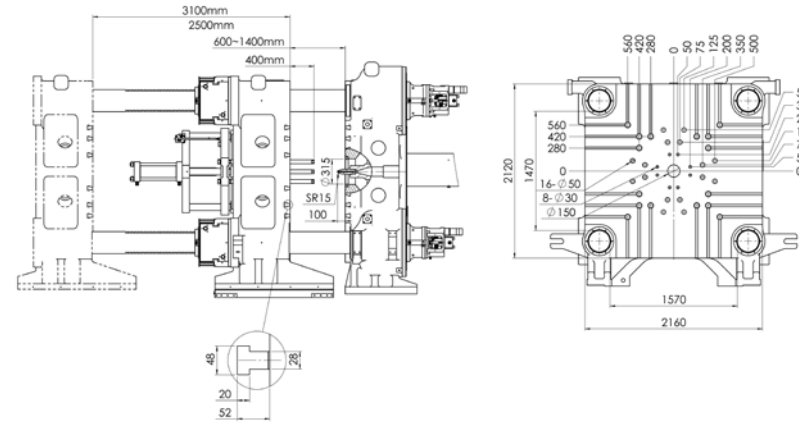
Clamping Unit	Unit	
Clamping Force (Max.)	t	1.450
Opening Stroke	mm	1.650 - 2.450
Maximum Daylight	mm	3.000
Mould platen (HxW)	mm	2.000 x 2.000
Space between Tie Bars (HxW)	mm	1.470 x 1.370
Max. Mould Thickness	mm	1350
Min. Mould Thickness	mm	550
Ejector Stroke	mm	400
Ejector Force	t	35



Injection unit	Unit	J1	J2	K1	K2	N1	N2	P1	P2	Q1	Q2	A1	A2	R1	R2	B1	B2	C1	C2	D1	D2	E1	E2	F1	F2	G1	G2	H
Swept volume	cm <sup>3</sup>	2.163	2.543	2.861	3.393	3.770	4.749	5.224	6.217	6.782	7.960	8.623	10.001	10.770	12.364	14.483	19.713	23.079	30.144	34.540	43.715	49.278	60.838	67.216	81.331	89.048	105.975	116.573
Shot weight (PS)	g	1.968	2.314	2.604	3.087	3.430	4.322	4.754	5.658	6.172	7.244	7.847	9.101	9.801	11.251	13.180	17.939	21.002	27.431	31.431	39.780	44.843	55.362	61.166	74.011	81.034	96.437	106.081
Screw diameter	mm	83	90	90	98	98	110	110	120	120	130	130	140	140	150	150	175	175	200	200	225	225	250	250	275	275	300	300
Screw L/D ratio	L/D	22	20,3	22	20,2	22	19,5	22	20,2	22	20,3	22	20,4	22	20,5	22	18,9	22	19,3	22	19,6	22	19,8	22	20	22	20,2	22
Injection pressure (Max.)	kgf/cm <sup>2</sup>	1.905	1.620	1.874	1.579	1.874	1.487	1.874	1.579	1.874	1.599	1.834	1.579	1.834	1.599	1.834	1.345	1.630	1.253	1.630	1.283	1.630	1.324	1.630	1.345	1.630	1.365	1.630
Injection rate (PS)	g/s	509	599	578	685	655	825	805	958	951	1.116	1.106	1.282	1.264	1.452	1.265	1.722	1.629	2.128	2.011	2.545	2.475	3.056	2.839	3.435	3.922	4.668	4.518
Screw rotation speed (Max.)	rpm	150	150	140	140	130	130	115	115	110	110	100	100	95	95	95	80	83	69	65	50	60	50	60	47	50	40	40
Screw stroke	mm	400	400	450	450	500	500	550	550	600	600	650	650	700	700	820	820	960	960	1.100	1.100	1.240	1.240	1.370	1.370	1.500	1.500	1.650
Others																												
System pressure	kgf/cm <sup>2</sup>	175	175	175	175	175	175	175	175	175	175	175	175	175	175	175	175	175	175	175	175	175	175	175	175	175	175	175
Pump motor	kW	75	75	85	85	93	93	104,5	104,5	124,5	124,5	142,5	142,5	159,5	159,5	159,5	159,5	195	195	240	240	285	285	375	375	520	520	600
Heating capacity	kW	38	38	42	42	48	48	50	50	70	70	80	80	95	95	100	100	130	130	175	175	220	220	270	270	330	330	390
Temperature control zones	Zones	7	7	7	7	7	7	7	7	7	7	7	7	7	7	7	7	7	7	7	7	7	7	7	7	7	7	7
Oil tank capacity	L	1.750	1.750	1.800	1.800	1.850	1.850	2.300	2.300	2.400	2.400	2.750	2.750	3.350	3.350	3.900	3.900	4.200	4.200	6.000	6.000	7.450	7.450	8.700	8.700	11.000	11.000	12.500
Machine Dimensions (LxWxH)	m	10,6x3,75x3,15		10,7x3,75x3,15		10,8x3,75x3,15		11,6x3,75x3,15		12,2x3,75x3,15		12,3x3,75x3,15		12,7x3,75x3,15		12,7x3,75x3,15		13,7x3,75x3,15		14,6x3,75x3,15		16,1x3,75x3,15		17,5x3,75x3,15		20x3,75x3,15		22x3,75x3,15
Machine Weight (Approx.)	t	54		55		57		59		61		63		64		65		72		80		90		103		120		140

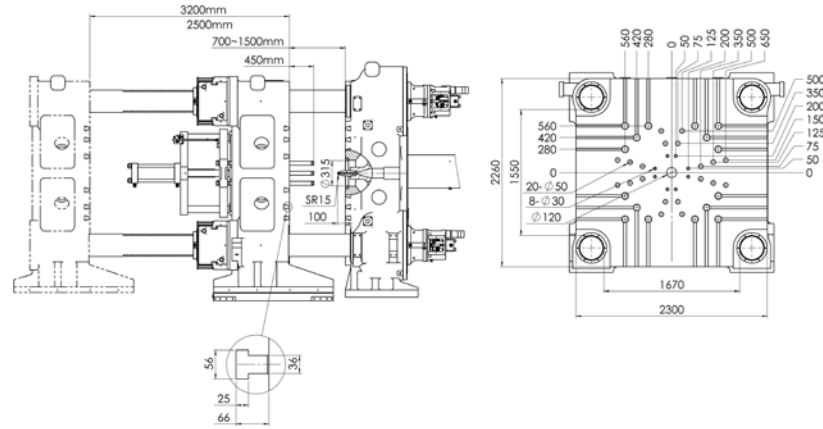
**SUPERMASTER 1650 - TP Advanced**

Clamping Unit	Unit	
Clamping Force (Max.)	t	1.650
Opening Stroke	mm	1.700 - 2.500
Maximum Daylight	mm	3.100
Mould platen (HxV)	mm	2.160 x 2.120
Space between Tie Bars (HxV)	mm	1.570 x 1.470
Max. Mould Thickness	mm	1.400
Min. Mould Thickness	mm	600
Ejector Stroke	mm	400
Ejector Force	t	35



Injection unit	Unit	J1	J2	K1	K2	N1	N2	P1	P2	Q1	Q2	A1	A2	R1	R2	B1	B2	C1	C2	D1	D2	E1	E2	F1	F2	G1	G2	H	
Swept volume	cm <sup>3</sup>	2.163	2.543	2.861	3.393	3.770	4.749	5.224	6.217	6.782	7.960	8.623	10.001	10.770	12.364	14.483	19.713	23.079	30.144	34.540	43.715	49.278	60.838	67.216	81.331	89.048	105.975	116.573	
Shot weight (PS)	g	1.968	2.314	2.604	3.087	3.430	4.322	4.754	5.658	6.172	7.244	7.847	9.101	9.801	11.251	13.180	17.939	21.002	27.431	31.431	39.780	44.843	55.362	61.166	74.011	81.034	96.437	106.081	
Screw diameter	mm	83	90	90	98	98	110	110	120	120	130	130	140	140	150	150	175	175	200	200	225	225	250	250	275	275	300	300	
Screw L/D ratio	L/D	22	20,3	22	20,2	22	19,5	22	20,2	22	20,3	22	20,4	22	20,5	22	18,9	22	19,3	22	19,6	22	19,8	22	20	22	20,2	22	
Injection pressure (Max.)	kgf/cm <sup>2</sup>	1.905	1.620	1.874	1.579	1.874	1.487	1.874	1.579	1.874	1.599	1.834	1.579	1.834	1.599	1.834	1.345	1.630	1.253	1.630	1.283	1.630	1.324	1.630	1.345	1.630	1.365	1.630	
Injection rate (PS)	g/s	509	599	578	685	655	825	805	958	951	1.116	1.106	1.282	1.264	1.452	1.265	1.722	1.629	2.128	2.011	2.545	2.475	3.056	2.839	3.435	3.922	4.668	4.518	
Screw rotation speed (Max.)	rpm	150	150	140	140	130	130	115	115	110	110	100	100	95	95	95	80	83	69	65	50	60	50	60	47	50	40	40	
Screw stroke	mm	400	400	450	450	500	500	550	550	600	600	650	650	700	700	820	820	960	960	1.100	1.100	1.240	1.240	1.370	1.370	1.500	1.500	1.650	
Others																													
System pressure	kgf/cm <sup>2</sup>	175	175	175	175	175	175	175	175	175	175	175	175	175	175	175	175	175	175	175	175	175	175	175	175	175	175	175	
Pump motor	kW	75	75	85	85	93	93	104,5	104,5	124,5	124,5	142,5	142,5	159,5	159,5	159,5	159,5	195	195	240	240	285	285	375	375	520	520	600	
Heating capacity	kW	38	38	42	42	48	48	50	50	70	70	80	80	95	95	100	100	130	130	175	175	220	220	270	270	330	330	390	
Temperature control zones	Zones	7	7	7	7	7	7	7	7	7	7	7	7	7	7	7	7	7	7	7	7	7	7	7	7	7	7	7	
Oil tank capacity	L	1.780	1.780	1.830	1.830	1.880	1.880	2.350	2.350	2.450	2.450	2.800	2.800	3.400	3.400	3.950	3.950	4.250	4.250	6.050	6.050	7.500	7.500	8.750	8.750	11.050	11.050	12.550	
Machine Dimensions (LxWxH)	m	10,6x3,8x3,3		10,7x3,8x3,3		10,8x3,8x3,3		11,6x3,8x3,3		12,2x3,8x3,3		12,3x3,8x3,3		12,7x3,8x3,3		12,7x3,8x3,3		13,7x3,8x3,3		14,6x3,8x3,3		16,1x3,8x3,3		17,5x3,8x3,3		20x3,8x3,3		22x3,8x3,3	
Machine Weight (Approx.)	t	59		60		62		64		66		68		69		70		77		85		95		108		125		145	

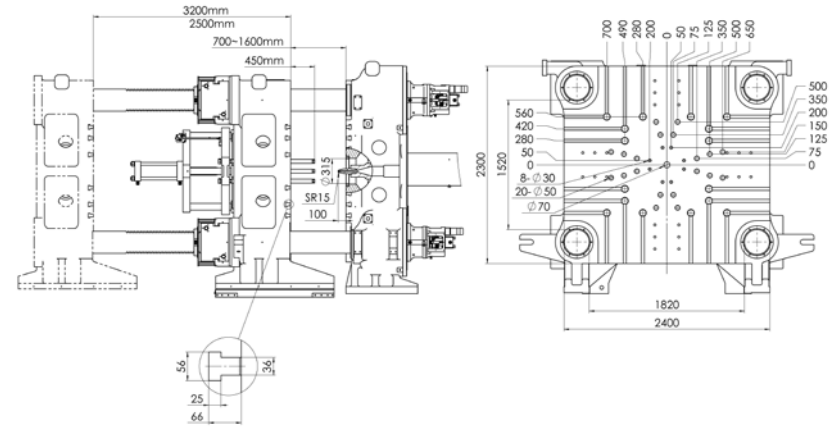
Clamping Unit	Unit	
Clamping Force (Max.)	t	1.900
Opening Stroke	mm	1.700 - 2.500
Maximum Daylight	mm	3.200
Mould platen (HxW)	mm	2.300 x 2.260
Space between Tie Bars (HxW)	mm	1.670 x 1.550
Max. Mould Thickness	mm	1.500
Min. Mould Thickness	mm	700
Ejector Stroke	mm	450
Ejector Force	t	45



Injection unit	Unit	J1	J2	K1	K2	N1	N2	P1	P2	Q1	Q2	A1	A2	R1	R2	B1	B2	C1	C2	D1	D2	E1	E2	F1	F2	G1	G2	H
Swept volume	cm <sup>3</sup>	2.163	2.543	2.861	3.393	3.770	4.749	5.224	6.217	6.782	7.960	8.623	10.001	10.770	12.364	14.483	19.713	23.079	30.144	34.540	43.715	49.278	60.838	67.216	81.331	89.048	105.975	116.573
Shot weight (PS)	g	1.968	2.314	2.604	3.087	3.430	4.322	4.754	5.658	6.172	7.244	7.847	9.101	9.801	11.251	13.180	17.939	21.002	27.431	31.431	39.780	44.843	55.362	61.166	74.011	81.034	96.437	106.081
Screw diameter	mm	83	90	90	98	98	110	110	120	120	130	130	140	140	150	150	175	175	200	200	225	225	250	250	275	275	300	300
Screw L/D ratio	L/D	22	20,3	22	20,2	22	19,5	22	20,2	22	20,3	22	20,4	22	20,5	22	18,9	22	19,3	22	19,6	22	19,8	22	20	22	20,2	22
Injection pressure (Max.)	kgf/cm <sup>2</sup>	1.905	1.620	1.874	1.579	1.874	1.487	1.874	1.579	1.874	1.599	1.834	1.579	1.834	1.599	1.834	1.345	1.630	1.253	1.630	1.283	1.630	1.324	1.630	1.345	1.630	1.365	1.630
Injection rate (PS)	g/s	509	599	578	685	655	825	805	958	951	1.116	1.106	1.282	1.264	1.452	1.265	1.722	1.629	2.128	2.011	2.545	2.475	3.056	2.839	3.435	3.922	4.668	4.518
Screw rotation speed (Max.)	rpm	150	150	140	140	130	130	115	115	110	110	100	100	95	95	95	80	83	69	65	50	60	50	60	47	50	40	40
Screw stroke	mm	400	400	450	450	500	500	550	550	600	600	650	650	700	700	820	820	960	960	1.100	1.100	1.240	1.240	1.370	1.370	1.500	1.500	1.650
Others																												
System pressure	kgf/cm <sup>2</sup>	175	175	175	175	175	175	175	175	175	175	175	175	175	175	175	175	175	175	175	175	175	175	175	175	175	175	175
Pump motor	kW	75	75	85	85	93	93	104,5	104,5	124,5	124,5	142,5	142,5	159,5	159,5	159,5	159,5	195	195	240	240	285	285	375	375	520	520	600
Heating capacity	kW	38	38	42	42	48	48	50	50	70	70	80	80	95	95	100	100	130	130	175	175	220	220	270	270	330	330	390
Temperature control zones	Zones	7	7	7	7	7	7	7	7	7	7	7	7	7	7	7	7	7	7	7	7	7	7	7	7	7	7	7
Oil tank capacity	L	1.800	1.800	1.850	1.850	1.900	1.900	2.400	2.400	2.500	2.500	2.850	2.850	3.450	3.450	4.000	4.000	4.300	4.300	6.100	6.100	7.550	7.550	8.800	8.800	11.000	11.000	12.600
Machine Dimensions (LxWxH)	m	10,8x4,2x3,5		10,9x4,2x3,5		11x4,2x3,5		11,8x4,2x3,5		12,4x4,2x3,5		12,5x4,2x3,5		12,9x4,2x3,5		12,9x4,2x3,5		14x4,2x3,5		14,8x4,2x3,5		16,4x4,2x3,5		17,7x4,2x3,5		20,2x4,2x3,5		22,2x4,2x3,5
Machine Weight (Approx.)	t	65		70		72		74		76		78		79		80		87		95		105		118		135		155

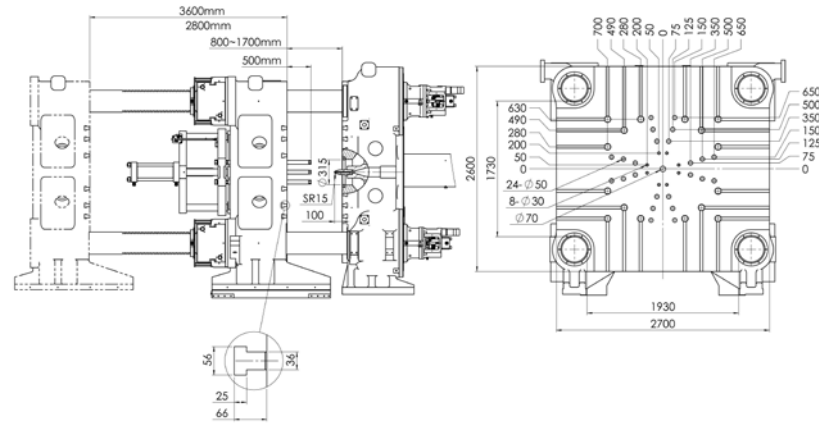
**SUPERMASTER 2200 - TP Advanced**

Clamping Unit	Unit	
Clamping Force (Max.)	t	2.200
Opening Stroke	mm	1.600 - 2.500
Maximum Daylight	mm	3.200
Mould platen (HxV)	mm	2.400 x 2.300
Space between Tie Bars (HxV)	mm	1.820 x 1.520
Max. Mould Thickness	mm	1.600
Min. Mould Thickness	mm	700
Ejector Stroke	mm	450
Ejector Force	t	45



Injection unit	Unit	J1	J2	K1	K2	N1	N2	P1	P2	Q1	Q2	A1	A2	R1	R2	B1	B2	C1	C2	D1	D2	E1	E2	F1	F2	G1	G2	H
Swept volume	cm <sup>3</sup>	2.163	2.543	2.861	3.393	3.770	4.749	5.224	6.217	6.782	7.960	8.623	10.001	10.770	12.364	14.483	19.713	23.079	30.144	34.540	43.715	49.278	60.838	67.216	81.331	89.048	105.975	116.573
Shot weight (PS)	g	1.968	2.314	2.604	3.087	3.430	4.322	4.754	5.658	6.172	7.244	7.847	9.101	9.801	11.251	13.180	17.939	21.002	27.431	31.431	39.780	44.843	55.362	61.166	74.011	81.034	96.437	106.081
Screw diameter	mm	83	90	90	98	98	110	110	120	120	130	130	140	140	150	150	175	175	200	200	225	225	250	250	275	275	300	300
Screw L/D ratio	L/D	22	20,3	22	20,2	22	19,5	22	20,2	22	20,3	22	20,4	22	20,5	22	18,9	22	19,3	22	19,6	22	19,8	22	20	22	20,2	22
Injection pressure (Max.)	kgf/cm <sup>2</sup>	1.905	1.620	1.874	1.579	1.874	1.487	1.874	1.579	1.874	1.599	1.834	1.579	1.834	1.599	1.834	1.345	1.630	1.253	1.630	1.283	1.630	1.324	1.630	1.345	1.630	1.365	1.630
Injection rate (PS)	g/s	509	599	578	685	655	825	805	958	951	1.116	1.106	1.282	1.264	1.452	1.265	1.722	1.629	2.128	2.011	2.545	2.475	3.056	2.839	3.435	3.922	4.668	4.518
Screw rotation speed (Max.)	rpm	150	150	140	140	130	130	115	115	110	110	100	100	95	95	95	80	83	69	65	50	60	50	60	47	50	40	40
Screw stroke	mm	400	400	450	450	500	500	550	550	600	600	650	650	700	700	820	820	960	960	1.100	1.100	1.240	1.240	1.370	1.370	1.500	1.500	1.650
Others																												
System pressure	kgf/cm <sup>2</sup>	175	175	175	175	175	175	175	175	175	175	175	175	175	175	175	175	175	175	175	175	175	175	175	175	175	175	175
Pump motor	kW	75	75	85	85	93	93	104,5	104,5	124,5	124,5	142,5	142,5	159,5	159,5	159,5	159,5	195	195	240	240	285	285	375	375	520	520	600
Heating capacity	kW	38	38	42	42	48	48	50	50	70	70	80	80	95	95	100	100	130	130	175	175	220	220	270	270	330	330	390
Temperature control zones	Zones	7	7	7	7	7	7	7	7	7	7	7	7	7	7	7	7	7	7	7	7	7	7	7	7	7	7	7
Oil tank capacity	L	1.800	1.800	1.850	1.850	1.900	1.900	2.400	2.400	2.500	2.500	2.850	2.850	3.450	3.450	4.000	4.000	4.300	4.300	6.100	6.100	7.550	7.550	8.800	8.800	11.000	11.000	12.600
Machine Dimensions (LxWxH)	m	10,8x4,2x3,5		10,9x4,2x3,5		11x4,2x3,5		11,8x4,2x3,5		12,4x4,2x3,5		12,5x4,2x3,5		12,9x4,2x3,5		12,9x4,2x3,5		14x4,2x3,5		14,8x4,2x3,5		16,4x4,2x3,5		17,7x4,2x3,5		20,2x4,2x3,5		22,2x4,2x3,5
Machine Weight (Approx.)	t	74		75		77		79		81		83		84		85		92		100		110		123		140		160

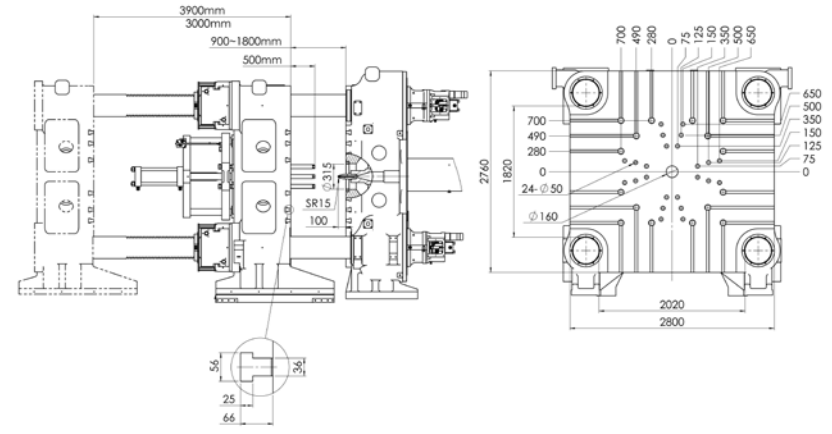
Clamping Unit	Unit	
Clamping Force (Max.)	t	2.600
Opening Stroke	mm	1.900 - 2.800
Maximum Daylight	mm	3.600
Mould platen (HxW)	mm	2.700 x 2.600
Space between Tie Bars (HxW)	mm	1.930 x 1.730
Max. Mould Thickness	mm	1.700
Min. Mould Thickness	mm	800
Ejector Stroke	mm	500
Ejector Force	t	45



Injection unit	Unit	J1	J2	K1	K2	N1	N2	P1	P2	Q1	Q2	A1	A2	R1	R2	B1	B2	C1	C2	D1	D2	E1	E2	F1	F2	G1	G2	H
Swept volume	cm <sup>3</sup>	2.163	2.543	2.861	3.393	3.770	4.749	5.224	6.217	6.782	7.960	8.623	10.001	10.770	12.364	14.483	19.713	23.079	30.144	34.540	43.715	49.278	60.838	67.216	81.331	89.048	105.975	116.573
Shot weight (PS)	g	1.968	2.314	2.604	3.087	3.430	4.322	4.754	5.658	6.172	7.244	7.847	9.101	9.801	11.251	13.180	17.939	21.002	27.431	31.431	39.780	44.843	55.362	61.166	74.011	81.034	96.437	106.081
Screw diameter	mm	83	90	90	98	98	110	110	120	120	130	130	140	140	150	150	175	175	200	200	225	225	250	250	275	275	300	300
Screw L/D ratio	L/D	22	20,3	22	20,2	22	19,5	22	20,2	22	20,3	22	20,4	22	20,5	22	18,9	22	19,3	22	19,6	22	19,8	22	20	22	20,2	22
Injection pressure (Max.)	kgf/cm <sup>2</sup>	1.905	1.620	1.874	1.579	1.874	1.487	1.874	1.579	1.874	1.599	1.834	1.579	1.834	1.599	1.834	1.345	1.630	1.253	1.630	1.283	1.630	1.324	1.630	1.345	1.630	1.365	1.630
Injection rate (PS)	g/s	509	599	578	685	655	825	805	958	951	1.116	1.106	1.282	1.264	1.452	1.265	1.722	1.629	2.128	2.011	2.545	2.475	3.056	2.839	3.435	3.922	4.668	4.518
Screw rotation speed (Max.)	rpm	150	150	140	140	130	130	115	115	110	110	100	100	95	95	95	80	83	69	65	50	60	50	60	47	50	40	40
Screw stroke	mm	400	400	450	450	500	500	550	550	600	600	650	650	700	700	820	820	960	960	1.100	1.100	1.240	1.240	1.370	1.370	1.500	1.500	1.650
Others																												
System pressure	kgf/cm <sup>2</sup>	175	175	175	175	175	175	175	175	175	175	175	175	175	175	175	175	175	175	175	175	175	175	175	175	175	175	175
Pump motor	kW	75	75	85	85	93	93	104,5	104,5	124,5	124,5	142,5	142,5	159,5	159,5	159,5	159,5	195	195	240	240	285	285	375	375	520	520	600
Heating capacity	kW	38	38	42	42	48	48	50	50	70	70	80	80	95	95	100	100	130	130	175	175	220	220	270	270	330	330	390
Temperature control zones	Zones	7	7	7	7	7	7	7	7	7	7	7	7	7	7	7	7	7	7	7	7	7	7	7	7	7	7	7
Oil tank capacity	L	1.850	1.850	1.900	1.900	1.950	1.950	2.450	2.450	2.550	2.550	2.900	2.900	3.500	3.500	4.050	4.050	4.350	4.350	6.150	6.150	7.600	7.600	8.850	8.850	11.150	11.150	12.650
Machine Dimensions (LxWxH)	m	11,5x4,4x3,7		11,6x4,4x3,7		11,7x4,4x3,7		12,5x4,4x3,7		13,1x4,4x3,7		13,2x4,4x3,7		13,6x4,4x3,7		13,6x4,4x3,7		14,6x4,4x3,7		15,5x4,4x3,7		17x4,4x3,7		18,4x4,4x3,7		20,8x4,4x3,7		20,9x4,4x3,7
Machine Weight (Approx.)	t	94		95		97		99		101		103		104		105		112		120		130		143		160		180

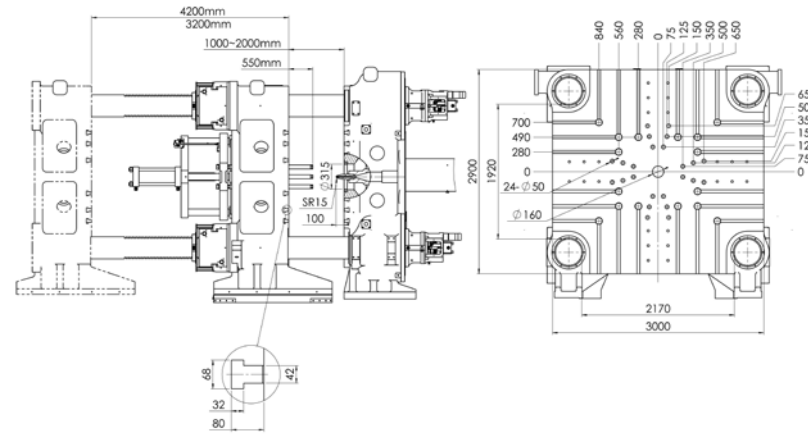
**SUPERMASTER 3000 - TP Advanced**

Clamping Unit	Unit	
Clamping Force (Max.)	t	3.000
Opening Stroke	mm	2.100 - 3.000
Maximum Daylight	mm	3.900
Mould platen (HxV)	mm	2.800 x 2.760
Space between Tie Bars (HxV)	mm	2.020 x 1.820
Max. Mould Thickness	mm	1.800
Min. Mould Thickness	mm	900
Ejector Stroke	mm	500
Ejector Force	t	45



Injection unit	Unit	J1	J2	K1	K2	N1	N2	P1	P2	Q1	Q2	A1	A2	R1	R2	B1	B2	C1	C2	D1	D2	E1	E2	F1	F2	G1	G2	H
Swept volume	cm <sup>3</sup>	2.163	2.543	2.861	3.393	3.770	4.749	5.224	6.217	6.782	7.960	8.623	10.001	10.770	12.364	14.483	19.713	23.079	30.144	34.540	43.715	49.278	60.838	67.216	81.331	89.048	105.975	116.573
Shot weight (PS)	g	1.968	2.314	2.604	3.087	3.430	4.322	4.754	5.658	6.172	7.244	7.847	9.101	9.801	11.251	13.180	17.939	21.002	27.431	31.431	39.780	44.843	55.362	61.166	74.011	81.034	96.437	106.081
Screw diameter	mm	83	90	90	98	98	110	110	120	120	130	130	140	140	150	150	175	175	200	200	225	225	250	250	275	275	300	300
Screw L/D ratio	L/D	22	20,3	22	20,2	22	19,5	22	20,2	22	20,3	22	20,4	22	20,5	22	18,9	22	19,3	22	19,6	22	19,8	22	20	22	20,2	22
Injection pressure (Max.)	kgf/cm <sup>2</sup>	1.905	1.620	1.874	1.579	1.874	1.487	1.874	1.579	1.874	1.599	1.834	1.579	1.834	1.599	1.834	1.345	1.630	1.253	1.630	1.283	1.630	1.324	1.630	1.345	1.630	1.365	1.630
Injection rate (PS)	g/s	509	599	578	685	655	825	805	958	951	1.116	1.106	1.282	1.264	1.452	1.265	1.722	1.629	2.128	2.011	2.545	2.475	3.056	2.839	3.435	3.922	4.668	4.518
Screw rotation speed (Max.)	rpm	150	150	140	140	130	130	115	115	110	110	100	100	95	95	95	80	83	69	65	50	60	50	60	47	50	40	40
Screw stroke	mm	400	400	450	450	500	500	550	550	600	600	650	650	700	700	820	820	960	960	1.100	1.100	1.240	1.240	1.370	1.370	1.500	1.500	1.650
Others																												
System pressure	kgf/cm <sup>2</sup>	175	175	175	175	175	175	175	175	175	175	175	175	175	175	175	175	175	175	175	175	175	175	175	175	175	175	175
Pump motor	kW	75	75	85	85	93	93	104,5	104,5	124,5	124,5	142,5	142,5	159,5	159,5	159,5	159,5	195	195	240	240	285	285	375	375	520	520	600
Heating capacity	kW	38	38	42	42	48	48	50	50	70	70	80	80	95	95	100	100	130	130	175	175	220	220	270	270	330	330	390
Temperature control zones	Zones	7	7	7	7	7	7	7	7	7	7	7	7	7	7	7	7	7	7	7	7	7	7	7	7	7	7	7
Oil tank capacity	L	1.900	1.900	1.950	1.950	2.000	2.000	2.500	2.500	2.600	2.600	2.950	2.950	3.550	3.550	4.100	4.100	4.400	4.400	6.200	6.200	7.650	7.650	8.900	8.900	11.200	11.200	12.700
Machine Dimensions (LxWxH)	m	11,9x5,0x4		12x5,0x4		12,1x5,0x4		12,9x5,0x4		13,6x5,0x4		13,7x5,0x4		14,1x5,0x4		14,1x5,0x4		15,1x5,0x4		16x5,0x4		17,5x5,0x4		18,9x5,0x4		21,3x5,0x4		23,3x5,0x4
Machine Weight (Approx.)	t	114		115		117		119		121		123		124		125		132		140		150		163		180		200

Clamping Unit	Unit	
Clamping Force (Max.)	t	3.600
Opening Stroke	mm	2.200 - 3.200
Maximum Daylight	mm	4.200
Mould platen (HxW)	mm	3.000 x 2.900
Space between Tie Bars (HxW)	mm	2.170 x 1.920
Max. Mould Thickness	mm	2.000
Min. Mould Thickness	mm	1.000
Ejector Stroke	mm	550
Ejector Force	t	55

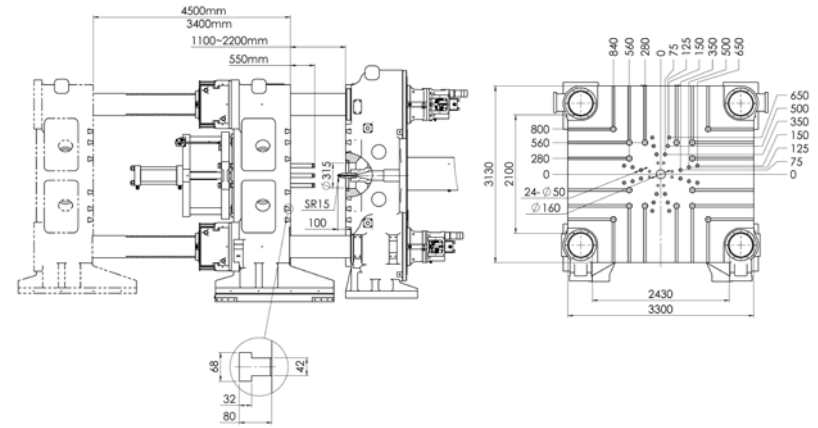


Injection unit	Unit	J1	J2	K1	K2	N1	N2	P1	P2	Q1	Q2	A1	A2	R1	R2	B1	B2	C1	C2	D1	D2	E1	E2	F1	F2	G1	G2	H	
Swept volume	cm <sup>3</sup>	2.163	2.543	2.861	3.393	3.770	4.749	5.224	6.217	6.782	7.960	8.623	10.001	10.770	12.364	14.483	19.713	23.079	30.144	34.540	43.715	49.278	60.838	67.216	81.331	89.048	105.975	116.573	
Shot weight (PS)	g	1.968	2.314	2.604	3.087	3.430	4.322	4.754	5.658	6.172	7.244	7.847	9.101	9.801	11.251	13.180	17.939	21.002	27.431	31.431	39.780	44.843	55.362	61.166	74.011	81.034	96.437	106.081	
Screw diameter	mm	83	90	90	98	98	110	110	120	120	130	130	140	140	150	150	175	175	200	200	225	225	250	250	275	275	300	300	
Screw L/D ratio	L/D	22	20,3	22	20,2	22	19,5	22	20,2	22	20,3	22	20,4	22	20,5	22	18,9	22	19,3	22	19,6	22	19,8	22	20	22	20,2	22	
Injection pressure (Max.)	kgf/cm <sup>2</sup>	1.905	1.620	1.874	1.579	1.874	1.487	1.874	1.579	1.874	1.599	1.834	1.579	1.834	1.599	1.834	1.345	1.630	1.253	1.630	1.283	1.630	1.324	1.630	1.345	1.630	1.365	1.630	
Injection rate (PS)	g/s	509	599	578	685	655	825	805	958	951	1.116	1.106	1.282	1.264	1.452	1.265	1.722	1.629	2.128	2.011	2.545	2.475	3.056	2.839	3.435	3.922	4.668	4.518	
Screw rotation speed (Max.)	rpm	150	150	140	140	130	130	115	115	110	110	100	100	95	95	95	80	83	69	65	50	60	50	60	47	50	40	40	
Screw stroke	mm	400	400	450	450	500	500	550	550	600	600	650	650	700	700	820	820	960	960	1.100	1.100	1.240	1.240	1.370	1.370	1.500	1.500	1.650	
<b>Others</b>																													
System pressure	kgf/cm <sup>2</sup>	175	175	175	175	175	175	175	175	175	175	175	175	175	175	175	175	175	175	175	175	175	175	175	175	175	175	175	175
Pump motor	kW	75	75	85	85	93	93	104,5	104,5	124,5	124,5	142,5	142,5	159,5	159,5	159,5	159,5	195	195	240	240	285	285	375	375	520	520	600	
Heating capacity	kW	38	38	42	42	48	48	50	50	70	70	80	80	95	95	100	100	130	130	175	175	220	220	270	270	330	330	390	
Temperature control zones	Zones	7	7	7	7	7	7	7	7	7	7	7	7	7	7	7	7	7	7	7	7	7	7	7	7	7	7	7	
Oil tank capacity	L	1.950	1.950	2.000	2.000	2.050	2.050	2.550	2.550	2.650	2.650	3.000	3.000	3.600	3.600	4.150	4.150	4.450	4.450	6.250	6.250	7.700	7.700	8.950	8.950	11.250	11.250	12.750	
Machine Dimensions (LxWxH)	m	12,4x5,3x4,2		12,5x5,3x4,2		12,6x5,3x4,2		13,5x5,3x4,2		14x5,3x4,2		14,2x5,3x4,2		14,5x5,3x4,2		14,5,3x4,2		15,6x5,3x4,2		16,5x5,3x4,2		18x5,3x4,2		19,4x5,3x4,2		21,8x5,3x4,2		23,8x5,3x4,2	
Machine Weight (Approx.)	t	139		140		142		144		146		148		149		150		157		165		175		188		205		225	



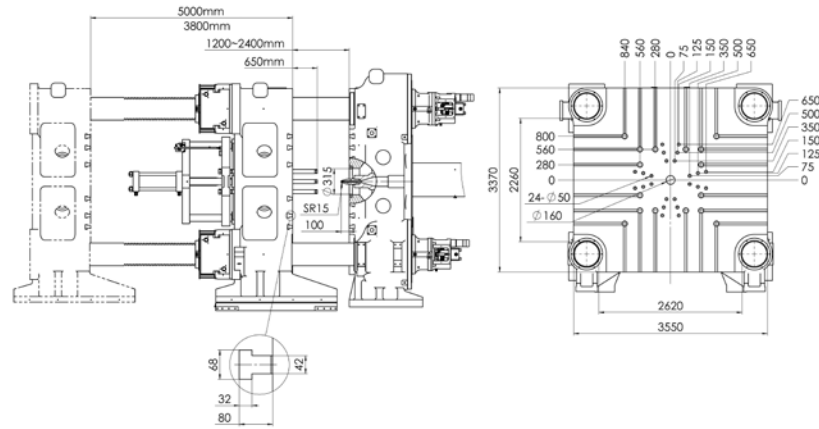
**SUPERMASTER 4500 - TP Advanced**

Clamping Unit	Unit	
Clamping Force (Max.)	t	4.500
Opening Stroke	mm	2.300 - 3.400
Maximum Daylight	mm	4.500
Mould platen (мм)	mm	3.300 x 3.130
Space between Tie Bars (мм)	mm	2.430 x 2.100
Max. Mould Thickness	mm	2.200
Min. Mould Thickness	mm	1.100
Ejector Stroke	mm	550
Ejector Force	t	55



Injection unit	Unit	J1	J2	K1	K2	N1	N2	P1	P2	Q1	Q2	A1	A2	R1	R2	B1	B2	C1	C2	D1	D2	E1	E2	F1	F2	G1	G2	H
Swept volume	cm <sup>3</sup>	2.163	2.543	2.861	3.393	3.770	4.749	5.224	6.217	6.782	7.960	8.623	10.001	10.770	12.364	14.483	19.713	23.079	30.144	34.540	43.715	49.278	60.838	67.216	81.331	89.048	105.975	116.573
Shot weight (PS)	g	1.968	2.314	2.604	3.087	3.430	4.322	4.754	5.658	6.172	7.244	7.847	9.101	9.801	11.251	13.180	17.939	21.002	27.431	31.431	39.780	44.843	55.362	61.166	74.011	81.034	96.437	106.081
Screw diameter	mm	83	90	90	98	98	110	110	120	120	130	130	140	140	150	150	175	175	200	200	225	225	250	250	275	275	300	300
Screw L/D ratio	L/D	22	20,3	22	20,2	22	19,5	22	20,2	22	20,3	22	20,4	22	20,5	22	18,9	22	19,3	22	19,6	22	19,8	22	20	22	20,2	22
Injection pressure (Max.)	kgf/cm <sup>2</sup>	1.905	1.620	1.874	1.579	1.874	1.487	1.874	1.579	1.874	1.599	1.834	1.579	1.834	1.599	1.834	1.345	1.630	1.253	1.630	1.283	1.630	1.324	1.630	1.345	1.630	1.365	1.630
Injection rate (PS)	g/s	509	599	578	685	655	825	805	958	951	1.116	1.106	1.282	1.264	1.452	1.265	1.722	1.629	2.128	2.011	2.545	2.475	3.056	2.839	3.435	3.922	4.668	4.518
Screw rotation speed (Max.)	rpm	150	150	140	140	130	130	115	115	110	110	100	100	95	95	95	80	83	69	65	50	60	50	60	47	50	40	40
Screw stroke	mm	400	400	450	450	500	500	550	550	600	600	650	650	700	700	820	820	960	960	1.100	1.100	1.240	1.240	1.370	1.370	1.500	1.500	1.650
Others																												
System pressure	kgf/cm <sup>2</sup>	175	175	175	175	175	175	175	175	175	175	175	175	175	175	175	175	175	175	175	175	175	175	175	175	175	175	175
Pump motor	kW	75	75	85	85	93	93	104,5	104,5	124,5	124,5	142,5	142,5	159,5	159,5	159,5	159,5	195	195	240	240	285	285	375	375	520	520	600
Heating capacity	kW	38	38	42	42	48	48	50	50	70	70	80	80	95	95	100	100	130	130	175	175	220	220	270	270	330	330	390
Temperature control zones	Zones	7	7	7	7	7	7	7	7	7	7	7	7	7	7	7	7	7	7	7	7	7	7	7	7	7	7	7
Oil tank capacity	L	2.100	2.100	2.150	2.150	2.200	2.200	2.700	2.700	2.800	2.800	3.150	3.150	3.750	3.750	4.300	4.300	4.600	4.600	6.400	6.400	7.850	7.850	9.100	9.100	11.400	11.400	12.900
Machine Dimensions (LxWxH)	m	13x5,9x4,4		13,1x5,9x4,4		13,2x5,9x4,4		14x5,9x4,4		14,6x5,9x4,4		14,7x5,9x4,4		15,1x5,9x4,4		15,1x5,9x4,4		16,1x5,9x4,4		17x5,9x4,4		18,6x5,9x4,4		20x5,9x4,4		22,4x5,9x4,4		24,4x5,9x4,4
Machine Weight (Approx.)	t	174		175		177		179		181		183		184		185		192		200		210		223		240		260

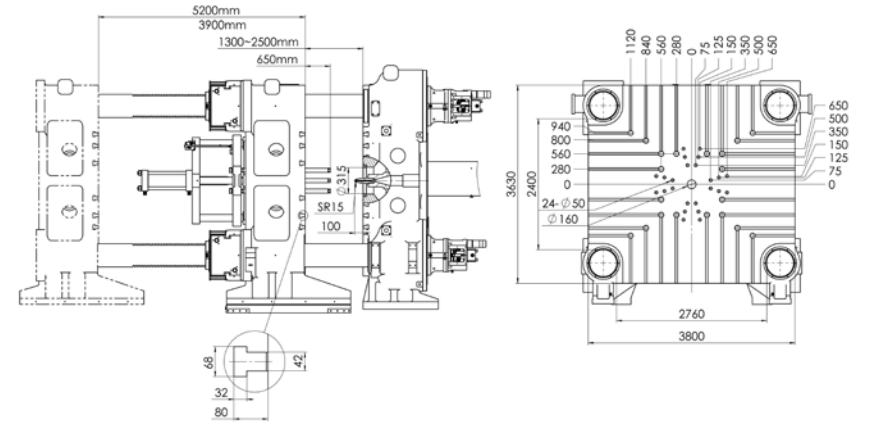
Clamping Unit	Unit	
Clamping Force (Max.)	t	5.500
Opening Stroke	mm	2.600 - 3.800
Maximum Daylight	mm	5.000
Mould platen (HxW)	mm	3.550 x 3.370
Space between Tie Bars (HxW)	mm	2.620 x 2.260
Max. Mould Thickness	mm	2.400
Min. Mould Thickness	mm	1.200
Ejector Stroke	mm	650
Ejector Force	t	80



Injection unit	Unit	J1	J2	K1	K2	N1	N2	P1	P2	Q1	Q2	A1	A2	R1	R2	B1	B2	C1	C2	D1	D2	E1	E2	F1	F2	G1	G2	H
Swept volume	cm <sup>3</sup>	2.163	2.543	2.861	3.393	3.770	4.749	5.224	6.217	6.782	7.960	8.623	10.001	10.770	12.364	14.483	19.713	23.079	30.144	34.540	43.715	49.278	60.838	67.216	81.331	89.048	105.975	116.573
Shot weight (PS)	g	1.968	2.314	2.604	3.087	3.430	4.322	4.754	5.658	6.172	7.244	7.847	9.101	9.801	11.251	13.180	17.939	21.002	27.431	31.431	39.780	44.843	55.362	61.166	74.011	81.034	96.437	106.081
Screw diameter	mm	83	90	90	98	98	110	110	120	120	130	130	140	140	150	150	175	175	200	200	225	225	250	250	275	275	300	300
Screw L/D ratio	L/D	22	20,3	22	20,2	22	19,5	22	20,2	22	20,3	22	20,4	22	20,5	22	18,9	22	19,3	22	19,6	22	19,8	22	20	22	20,2	22
Injection pressure (Max.)	kgf/cm <sup>2</sup>	1.905	1.620	1.874	1.579	1.874	1.487	1.874	1.579	1.874	1.599	1.834	1.579	1.834	1.599	1.834	1.345	1.630	1.253	1.630	1.283	1.630	1.324	1.630	1.345	1.630	1.365	1.630
Injection rate (PS)	g/s	509	599	578	685	655	825	805	958	951	1.116	1.106	1.282	1.264	1.452	1.265	1.722	1.629	2.128	2.011	2.545	2.475	3.056	2.839	3.435	3.922	4.668	4.518
Screw rotation speed (Max.)	rpm	150	150	140	140	130	130	115	115	110	110	100	100	95	95	95	80	83	69	65	50	60	50	60	47	50	40	40
Screw stroke	mm	400	400	450	450	500	500	550	550	600	600	650	650	700	700	820	820	960	960	1.100	1.100	1.240	1.240	1.370	1.370	1.500	1.500	1.650
Others																												
System pressure	kgf/cm <sup>2</sup>	175	175	175	175	175	175	175	175	175	175	175	175	175	175	175	175	175	175	175	175	175	175	175	175	175	175	175
Pump motor	kW	75	75	85	85	93	93	104,5	104,5	124,5	124,5	142,5	142,5	159,5	159,5	159,5	159,5	195	195	240	240	285	285	375	375	520	520	600
Heating capacity	kW	38	38	42	42	48	48	50	50	70	70	80	80	95	95	100	100	130	130	175	175	220	220	270	270	330	330	390
Temperature control zones	Zones	7	7	7	7	7	7	7	7	7	7	7	7	7	7	7	7	7	7	7	7	7	7	7	7	7	7	7
Oil tank capacity	L	2.300	2.300	2.350	2.350	2.400	2.400	2.850	2.850	2.950	2.950	3.300	3.300	3.900	3.900	4.450	4.450	4.750	4.750	6.550	6.550	8.000	8.000	9.250	9.250	11.500	11.500	13.050
Machine Dimensions (LxWxH)	m	13,5x6,1x4,6		13,6x6,1x4,6		13,7x6,1x4,6		14,5x6,1x4,6		15,1x6,1x4,6		15,2x6,1x4,6		15,6x6,1x4,6		15,6x6,1x4,6		16,6x6,1x4,6		17,5x6,1x4,6		19x6,1x4,6		20,4x6,1x4,6		22,9x6,1x4,6		24,9x6,1x4,6
Machine Weight (Approx.)	t	224		225		227		229		231		233		234		235		242		250		260		273		290		310

**SUPERMASTER 6500 - TP Advanced**

Clamping Unit	Unit	
Clamping Force (Max.)	t	6.500
Opening Stroke	mm	2.700 - 3.900
Maximum Daylight	mm	5.200
Mould platen (HxV)	mm	3.800 x 3.630
Space between Tie Bars (HxV)	mm	2.760 x 2.400
Max. Mould Thickness	mm	2.500
Min. Mould Thickness	mm	1.300
Ejector Stroke	mm	650
Ejector Force	t	80



Injection unit	Unit	J1	J2	K1	K2	N1	N2	P1	P2	Q1	Q2	A1	A2	R1	R2	B1	B2	C1	C2	D1	D2	E1	E2	F1	F2	G1	G2	H
Swept volume	cm <sup>3</sup>	2.163	2.543	2.861	3.393	3.770	4.749	5.224	6.217	6.782	7.960	8.623	10.001	10.770	12.364	14.483	19.713	23.079	30.144	34.540	43.715	49.278	60.838	67.216	81.331	89.048	105.975	116.573
Shot weight (PS)	g	1.968	2.314	2.604	3.087	3.430	4.322	4.754	5.658	6.172	7.244	7.847	9.101	9.801	11.251	13.180	17.939	21.002	27.431	31.431	39.780	44.843	55.362	61.166	74.011	81.034	96.437	106.081
Screw diameter	mm	83	90	90	98	98	110	110	120	120	130	130	140	140	150	150	175	175	200	200	225	225	250	250	275	275	300	300
Screw L/D ratio	L/D	22	20,3	22	20,2	22	19,5	22	20,2	22	20,3	22	20,4	22	20,5	22	18,9	22	19,3	22	19,6	22	19,8	22	20	22	20,2	22
Injection pressure (Max.)	kgf/cm <sup>2</sup>	1.905	1.620	1.874	1.579	1.874	1.487	1.874	1.579	1.874	1.599	1.834	1.579	1.834	1.599	1.834	1.345	1.630	1.253	1.630	1.283	1.630	1.324	1.630	1.345	1.630	1.365	1.630
Injection rate (PS)	g/s	509	599	578	685	655	825	805	958	951	1.116	1.106	1.282	1.264	1.452	1.265	1.722	1.629	2.128	2.011	2.545	2.475	3.056	2.839	3.435	3.922	4.668	4.518
Screw rotation speed (Max.)	rpm	150	150	140	140	130	130	115	115	110	110	100	100	95	95	95	80	83	69	65	50	60	50	60	47	50	40	40
Screw stroke	mm	400	400	450	450	500	500	550	550	600	600	650	650	700	700	820	820	960	960	1.100	1.100	1.240	1.240	1.370	1.370	1.500	1.500	1.650
Others																												
System pressure	kgf/cm <sup>2</sup>	175	175	175	175	175	175	175	175	175	175	175	175	175	175	175	175	175	175	175	175	175	175	175	175	175	175	175
Pump motor	kW	75	75	85	85	93	93	104,5	104,5	124,5	124,5	142,5	142,5	159,5	159,5	159,5	159,5	195	195	240	240	285	285	375	375	520	520	600
Heating capacity	kW	38	38	42	42	48	48	50	50	70	70	80	80	95	95	100	100	130	130	175	175	220	220	270	270	330	330	390
Temperature control zones	Zones	7	7	7	7	7	7	7	7	7	7	7	7	7	7	7	7	7	7	7	7	7	7	7	7	7	7	7
Oil tank capacity	L	2.400	2.400	2.450	2.450	2.500	2.500	2.950	2.950	3.050	3.050	3.400	3.400	4.000	4.000	4.550	4.550	4.850	4.850	6.650	6.650	8.100	8.100	9.350	9.350	11.650	11.650	13.150
Machine Dimensions (LxWxH)	m	14,1x6,4x4,8		14,2x6,4x4,8		14,3x6,4x4,8		15,1x6,4x4,8		15,7x6,4x4,8		15,8x6,4x4,8		16,2x6,4x4,8		16,2x6,4x4,8		17,2x6,4x4,8		18,1x6,4x4,8		19,6x6,4x4,8		21x6,4x4,8		23,5x6,4x4,8		25,4x6,4x4,8
Machine Weight (Approx.)	t	284		285		287		289		291		293		294		295		302		310		320		333		350		370



*Chen Hsong Europe*

Distributor:  
Address:

**Chen Hsong Europe B.V.**  
**Riezenweg 20<sup>A</sup>**

**7071 PV Uift**

**The Netherlands**

**+31 (0)315-681252**

**+31 (0)315-683656**

**info@chenhsongeuropa.eu**

**www.chenhsongeuropa.eu**

Phone

Fax:

Mail:

Website:



*The Chen Hsong Group*

**Hong Kong**  
**Shenzhen**  
**Shunde**  
**Ningbo**  
**Taiwan**

13-15 Dai Wang Street, Tai Po Industrial Estate, Tai Po, Hong Kong

No. 31-48, Renmin Zhong Road, Kengzi, Pingshan District, Shenzhen, China

Daliang Honggang District, Shunde, Foshan, Guangdong, China

No. 28 Yongjiang Road, Dagang Industry Area, Beilun, Ningbo, China

No. 1 Sung Chiang North Road, Chung Li Industrial District, Chung Li, Taoyuan. Taiwan, R.O.C.

Phone: +(852) 2665 3222

Fax: +(852) 2664 1115

Phone: +(86-755) 8413 9999

Fax: +(86-755) 8413 8750

Phone: +(86-757) 2233 8666

Fax: +(86-757) 2233 8566

Phone: +(86-574) 8683 2888

Fax: +(86-574) 8683 5550

Phone: +(886) 3452 2288

Fax: +(886) 3452 0261